



## PAPER C

Purpose: For Decision

# Committee report

Committee	<b>HEALTH AND WELLBEING BOARD</b>
Date	<b>17 OCTOBER 2019</b>
Title	<b>JOINT STRATEGIC NEEDS ASSESSMENT PLAN UPDATE</b>
Report of	<b>INTERIM DIRECTOR OF PUBLIC HEALTH</b>

---

### EXECUTIVE SUMMARY

1. The purpose of the Joint Strategic Needs Assessment (JSNA) is to assess the current and future health and social care needs of the local community. Partners of the health and wellbeing boards (HWBs) have equal and joint duties to prepare JSNAs.
2. To ensure the JSNA meets the needs of Health and WellBeing board partners for strategic planning. This plan was agreed at the Health and Wellbeing Board on 31 January 2019. This paper provides an update on progress.
3. This paper provides the Health and Wellbeing Board with a progress report against the JSNA 2018/19 workplan alongside a case study of one of these pieces of work. The Health and Wellbeing Board is asked to note the report.
4. Health and Wellbeing Board members are asked to review the proposed 2019/20 workplan and ensure the information is used as part of strategic planning.

### BACKGROUND

5. Under the Health and Social Care Act 2012, local health and wellbeing boards are responsible for coordinating the production of a joint strategic needs assessment (JSNA). The JSNA seeks to collate relevant information regarding future health and care needs of the local population, to inform and guide the planning and commissioning of health, wellbeing and social care services within a local authority area.
6. Local areas are free to undertake JSNAs in a way best suited to their local circumstances; there is no template or format that must be used and no mandatory data set that needs to be completed.

## JSNA PROGRESS REPORT

7. A JSNA Steering Group was established to support the HWB to deliver the JSNA and ensure the information requirements of key stakeholders are met and that information produced is relevant and useful. At the board in January 2019, a proposed work plan was presented and noted.
8. Progress against the current JSNA workplan shows that several pieces of work have been completed and published.
9. The proposed workplan is outlined for completion by April 2020

<b>Current JSNA workplan</b>		
<b>Theme</b>	<b>Purpose</b>	<b>Current status</b>
Public health outcome indicators	To highlight priority areas with a summary of annual changes and longstanding problem areas.	Complete
Demography	To summarise demographic changes affecting health and wellbeing.	Factsheet complete, phase 1 of new website complete, phase 2 in progress.
Community safety strategic assessment	To summarise crime, disorder, antisocial behaviour and annual trends.	Completed and published
Locality area profiles	To inform locality-based provision of services across health and social care.	Basic profiles completed and awaiting publication
Sexual health	To inform the re-commissioning of sexual health service.	Complete and published
Substance misuse and drug related deaths	To inform the re-commissioning of substance misuse services. To audit and investigate trends in drug related deaths.	Complete and awaiting Public Health sign-off for publication
Children	To support the commissioning of health visiting, school nursing and early years services.	0-19 needs assessment completed in place of factsheet refresh -
Housing and accommodation	To support the development of a housing strategy. It is necessary to predict total housing requirement and extra care/sheltered housing needs based on levels of demographic change and morbidity in the population.	Complete and published
Equality and diversity 2018-19	To detail the known protective characteristic information.	Complete and published
Education and skills	To ensure education and skills provision matches need, and support service planning.	Complete and published
Fuel poverty and excess winter deaths	To assess the level of impact on the Isle of Wight.	Complete and published
Life expectancy, mortality and end of life care	To assess the relative need on the Isle of Wight against these measures.	Complete and published

<b>Proposed JSNA workplan for completion by April 2020</b>	
<b>Topic area</b>	<b>Purpose</b>
Deprivation 2019	To assess IMD need on the Isle of Wight as informed by the next national update which is due for publication in 2019.
Community safety strategic assessment	To support development of the community safety strategy and inform the work of the community safety partnership.
Domestic abuse	To inform strategy decisions to tackle domestic abuse across a range of services and partners.
Smoking	To inform strategy and commissioning decisions to tackle smoking and tobacco use.
Indices of multiple deprivation	This is key to understanding some of the underlying wider determinant factors influencing health and wellbeing.
Older people	To inform strategy and commissioning decisions affecting older people across a range of services and partners.
Childhood poverty	To inform strategy and commissioning decisions affecting child poverty across a range of services and partners.
Healthy weight and physical activity	To support the Island's approach to tackling obesity and physical inactivity to maintain healthy weight.
Diabetes	To inform strategy and commissioning decisions to prioritise the prevention and optimal management of diabetes across a range of services and partners.
Demographics	To understand current and future demographics to inform strategic planning.
Equality and diversity 2019-20	To meet statutory responsibility of the council to publish this data, to inform strategy and commissioning decisions across a range of services and partners.
Physical disabilities	To inform strategy and commissioning decisions on physical disability across a range of services and partners.
Cancer	To inform strategy and commissioning decisions on cancer across a range of services and partners.
Breastfeeding and smoking in pregnancy	To ensure the best start in life by improving public health outcomes for children, young people and families as part of the start well chapter of the Island Health and Wellbeing Strategy.

10. Led by Hampshire Public Health Team a Hampshire and Isle of Wight Sustainability and Transformation Partnership (STP) JSNA has also been produced to inform STP delivery of the NHS Long Term Plan (LTP) and support the development of work of the STP. This includes key relevant information for the Isle of Wight.
11. A number of key strategic documents refer to information sourced from the JSNA and associated needs assessments. This includes the Island Plan, Housing Strategy, Hampshire and Isle of Wight Fire and Rescue Service risk profiles, Regeneration Strategy, Health and Wellbeing Strategy, Children and Young People's Strategy, Care Close to Home Strategy, Community Safety Partnership Strategy.
12. A key task this year is to produce an overarching summary of the data to give a picture of the health and social care needs of the Isle of Wight.
13. The JSNA work programme needs to progress with input from analysts from across the system.

#### JSNA CASE STUDY

14. The case study shows how the JSNA brought together information from a range of sources to provide credible intelligence which informed the Island's Regeneration Strategy.

#### STRATEGIC CONTEXT

15. This JSNA is a statutory duty of the health and wellbeing board and underpins key Strategies across the Island.
16. The aim of the JSNA is to provide information on the needs of the population to inform strategic planning and commissioning of services.

#### FINANCIAL / BUDGET IMPLICATIONS

17. There are no direct financial implications from noting this report and work plan.
18. This plan has been completed based on the finite resources of the public health data analysts within the Organisational Intelligence Team. With input from other analysts in the system the JSNA can progress to become a more effective resource for the Island

#### LEGAL IMPLICATIONS

19. As previously stated, the Health and Social Care Act 2012 identifies the duty of Health and Wellbeing Boards to produce a JSNA.

#### EQUALITY AND DIVERSITY

20. It is recognised that the council as a public body is required to meet its statutory obligations under the Equality Act 2010 to have due regard to eliminate unlawful

discrimination, promote equal opportunities between people from different groups and to foster good relations between people who share a protected characteristic and people who do not share it.

21. Demonstration of due regard to our responsibilities regarding equality are highlighted by the proposed topic areas for the JSNA which includes, demographic considerations including groups with protected characteristics of age, disability, gender reassignment, marriage and civil partnership, pregnancy and maternity, race, religion or belief, sex and sexual orientation.

### RISK MANAGEMENT

22. It should be noted that the public health analyst team are a finite resource which has identified the risk of slippage in these plans should other organisational demands be placed on the team.
23. Progress against this plan will be monitored by the JSNA Steering Group and will report to the HWB should it become clear that these plans cannot be delivered in the timescale identified.

### RECOMMENDATION

24. The Health and Wellbeing Board is asked to note the progress update against the 2018/19 JSNA workplan.
25. The Health and Wellbeing Board is asked to review and comment on the proposed JSNA workplan for 2019-2020.

### APPENDICES ATTACHED

Appendix 1 – Housing and accommodation JSNA briefing case study.

Contact Point: Bryan Hurley, Public Health Principal ☎ 821000  
e-mail [bryan.hurley@iow.gov.uk](mailto:bryan.hurley@iow.gov.uk)

SIMON BRYANT  
*Interim Director of Public Health*

CLLR CLARE MOSDELL  
*Cabinet Member for Adult Social Care,  
Public Health, and Housing Needs*

## Appendix 1 – Housing and Accommodation JSNA briefing Case Study

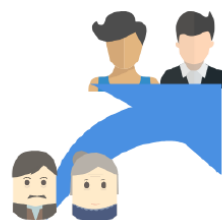
Housing was identified as a key priority for the Isle of Wight. The factsheet covered a wide range of information on the strategic context for housing on the Island. It pulls together a range of sources of information to provide a holistic strategic view of the current and future housing needs on the Island and is published on the [JSNA website](#)

### Summary



Empty properties are way ahead of the government's target - 1.52% compared to a target of 3.7%

The generation currently aged 18-36 spend over a third of their income on rent or about 12% on mortgages, compared with 5-10% of income spent by the same generation in the 1960s and 1970s



From a low in 2010, the number of households in temporary accommodation has started to increase in recent years

The Gypsy and Traveller Assessment identifies a need for 16 permanent pitches now, rising to 19 by 2035



The Island's 65+ and 85+ population is expected to increase, necessitating a change to the type of housing required in the future

powered by  
**PIKTOCHART**

The information was presented to the Island Housing Big Conversation and the Regeneration Programme Board during April and May and was also available as a resource at the Health and Wellbeing Board workshop on housing and the environment in April.

*“The JSNA has been a vital reference source in helping shape the regeneration strategy for the Isle of Wight. Up to date credible data has been instrumental, alongside qualitative feedback from local communities, in underpinning an informed debate about local needs and resulting regeneration priorities for different parts of the island via “The Wight We want” engagement process. ...the development of the council’s housing strategy has benefitted from recent work on housing needs undertaken by the JSNA providing some much-needed data about housing demand and supply to help inform thinking and policy about securing the right homes in the right places”*

Chris Ashman, Director of Regeneration