

# APPENDIX 1

## Joint Strategic Needs Assessment update for the Health and Wellbeing Board and Work Programme 2018/19

### Purpose

The purpose of this paper is to set out the proposed arrangements for updating and developing the IOW Joint Strategic Needs Assessment (JSNA) over the next five years 2017-2022 and to provide an update on progress against the 2018/19 work programme .

### Recommendations

The Board is asked to support the continued process for updating and developing the JSNA and the development of a more interactive web-based JSNA.

### Introduction

JSNAs were introduced by the Department of Health in April 2008 to strengthen joint working between the NHS (National Health Service) and local authorities. The Health and Social Care Act 2012 defined the duties for each local Health and Wellbeing Board (HWB) to produce a Joint Strategic Needs Assessment (JSNA) and a Joint Health and Wellbeing Strategy (JHWS).

The Local Government and Public Involvement in Health Act (2007) and the Health and Social Care Act (2012) place a responsibility on Local Authorities and the NHS (Clinical Commissioning Groups) through the Health and Wellbeing Board to undertake Joint Strategic Needs Assessment (JSNA).

The JSNA is a process that looks at the current and future health and care needs of a local population, including wider social factors that have an impact on health and wellbeing, such as housing and the built environment. The JSNA is used to identify priorities for action and to inform the planning and commissioning (buying) of health, wellbeing and care services across the local system in order to improve outcomes and reduce health inequalities.

The JSNA examines aggregated data to assess need at the population level rather than identifying need at an individual level. Specifically, JSNA is a tool to identify population groups where needs are not being met and who are experiencing poor outcomes or inequalities.

To undertake a joint strategic assessment of need, information from a range of sources needs to be pulled together. This will include routine data, such as mortality and hospital episode statistics, ad hoc local data and information from consultation with individuals, professionals, voluntary and community groups

The JSNA will provide a detailed evidence base and commentary on the current and future health and care needs of the local community. The JSNA will inform the development of the Joint Health and Wellbeing Strategy and help identify the priorities for planning and commissioning services and other interventions within the local health and care system.

### **Future arrangements for the IOW JSNA**

The JSNA is continuous process and as such requires ongoing updating and development.

Since 2014 the IOW JSNA has been produced as a series of factsheets on different topics. There are currently 35 different factsheets covering a variety of topics. In order to ensure that the JSNA remains relevant for stakeholders and up to date on key topics, a rolling programme of development of new analyses and updating of existing topics is required.

The frequency with which JSNA content will require updating is dependent on the availability and reliability of data. The greater the uncertainty surrounding the data, the more frequently they will need to be re-assessed and a decision made regarding refreshing that section of the JSNA.

It is important that the JSNA is easily accessible to a wide variety of audiences: health and social care commissioners for planning services; the voluntary and community sector to ensure that community needs and views are represented; service providers to inform development of services and the public so that they can review local health and social care information and plans. Feedback from partners was that the JSNA facts and figures page on [www.iowight.com](http://www.iowight.com) needed to be presented in a more user friendly way to enable users to find information themselves.

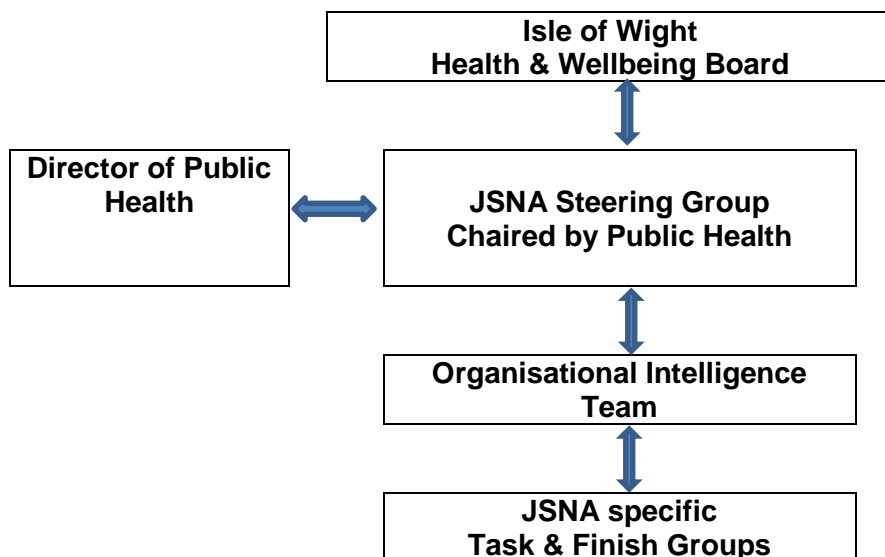
In response to this feedback the first phase of the development of a more interactive JSNA website has been completed. Data are automatically updated and have been made available on an easy to navigate platform for all stakeholders to use. The next phase will be to make the data to more interactive to support further use of the data. Website address <https://www.iow.gov.uk/jsna/geo3.aspx>

Further partner engagement identified the themes that needed to be assessed as a priority.

This led to the establishment of the JSNA steering group in March 2018 to oversee the production of this work (see Appendix 1 for membership). The steering group is chaired by Public Health and supported by the IOW Organisational Intelligence team.

It is proposed that going forward the public health team, led by the DPH, will lead delivery of the JSNA on behalf of the Health and Wellbeing Board, with the support of the IWC Organisational intelligence team.

**Figure 1**  
**Governance arrangements for the IOW JSNA**



To ensure that the content of the JSNA properly reflects local requirements the team will work with key people who represent the membership of the HWBB, Council directorates, NHS colleagues and other partners including community and voluntary groups and citizens. In addition the team will work with all of the partners to identify areas for in-depth analysis that should be considered for inclusion in the work programme. Table 1 sets out the JSNA priority work areas for 2018/19 and the progress with delivery. The JSNA steering group will meet regularly during 2019 to ensure delivery of the work programme and to identify future areas for needs assessment. Identification of areas for needs assessments are via the representative on the steering group.

## **8. Recommendation**

The Board is asked to support the continued process for updating and developing the JSNA and the development of a more interactive web-based JSNA.

**Table 1 JSNA work programme 2018-2019**

<b>Topic Area</b>	<b>Purpose</b>	<b>Date</b>	<b>Current status</b>
Public Health Outcome Indicators	To highlight priority areas with a summary of annual changes and longstanding problem areas	Sept – Nov 2018	Complete awaiting uploading to website
Demography	To summarise the demographic changes affecting health and wellbeing	Sept – Oct 2018	Complete. Narrative awaiting upload onto the interactive JSNA webpage
Community Safety Strategic Assessment	To summarise of crime, disorder, antisocial behaviour and annual trends	July - Sep 2018	Completed and published
Locality Area Profiles	To identify the health and wellbeing needs within each locality	Sept – Dec 2018	Draft completed and circulated to partners awaiting final feed
Sexual Health	To inform the re-commissioning of sexual health services	Sept - Dec 2018	Completed awaiting uploading to website
Substance misuse and drug related deaths	To inform the re-commissioning of substance misuse services. To audit and investigate trends in drug related deaths	Oct – Dec 2018	Draft complete, to be circulated to key partners for feedback
Children	To support the commissioning of health visiting, school nursing and early years services	Sept 2018 – Jan 2019	Draft complete, to be circulated to key partners for feedback.
Housing and	To support the development of a Housing Strategy. Predict total housing requirement and extra care / sheltered	Nov 2018 – Jan 2019	In progress

Accommodation	housing needs based on levels of demographic and morbidity characteristics	
---------------	--	--

**Table 1 JSNA work programme 2018-2019**

<b>Topic Area</b>	<b>Purpose</b>	<b>Date</b>	<b>Current status</b>
Equality and Diversity	To describe the known protective characteristic information, highlight need, inequalities and make recommendations for action	Jan - Feb 2019	To be started Jan 2019
Education and Skills	To ensure education and skills provision matches need, and support service planning	Jan – Mar 2019	To be started Jan 2019
Fuel Poverty and excess winter deaths	To assess the level of impact on the IOW and make recommendations for action	Feb – Mar 2019	To be started Feb 2019
Life Expectancy, mortality and end of life care factsheet	To assess the trend and relative need on the IOW against these measures	Mar – Apr 2019	To be started March 2019
Deprivation 2019	To assess the relative need on the IOW. Next national update of index of deprivation is due for publication in 2019.	Aug – Sep 2019	To be started August 2019

## Appendix 1

### Steering Group Membership

<b>Name</b>	<b>Title</b>	<b>Work area</b>
Laurence Gibson	<i>(Chair) Locum Consultant in Public Health</i>	<i>IWC- Public Health</i>
Bryan Hurley	<i>Public Health Principal Health and Wellbeing Board Manager</i>	<i>IWC- Public Health</i>
Ian Lloyd	<i>Organisational Change and Corporate Performance Manager</i>	<i>IWC- Organisational Intelligence</i>
Jonathan Smith	<i>Assistant Director Commissioning</i>	<i>IWC/CCG- Commissioning Management</i>
Ellie Roddick	<i>Head of Urgent Care &amp; Community Services Commissioning</i>	<i>Clinical Commissioning Group</i>
Amanda Gregory	<i>Regulatory &amp; Community Safety Service Manager</i>	<i>IWC- Regulatory Services</i>
Oliver Boulter	<i>Planning Team Leader</i>	<i>IWC- Planning</i>
Kathy Marriot	<i>Area Director - Children's Services</i>	<i>IWC – Children's Services</i>
Sarah Jackson	<i>District Commander</i>	<i>Hampshire Constabulary</i>
Dean Hayward	<i>Group Manager Delivery</i>	<i>IWC- Fire and Rescue</i>
Chris Ashman	<i>Regeneration Director</i>	<i>IWC- Regeneration</i>