

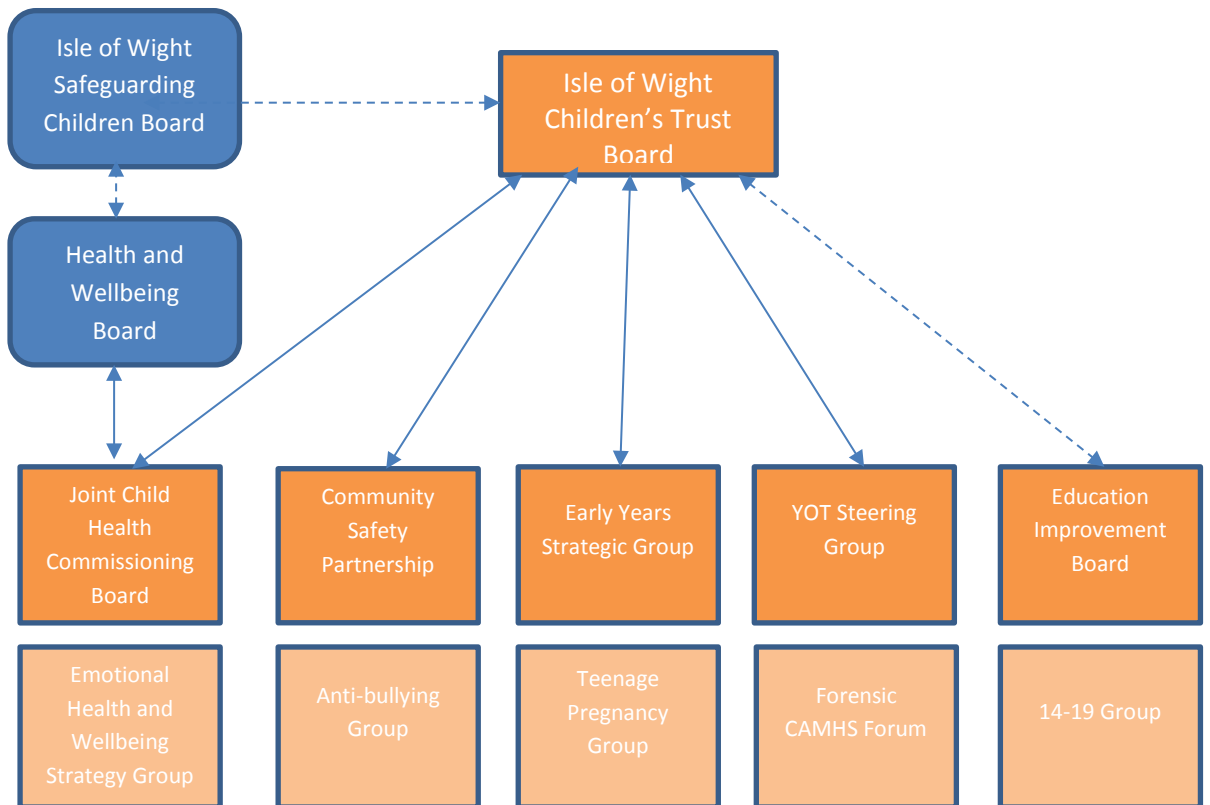
**STRATEGIC OBJECTIVE:
ENSURING CHILDREN AND YOUNG PEOPLE HAVE THE BEST POSSIBLE START IN LIFE**

LEAD PARTNERSHIP BOARD: Isle of Wight Children’s Trust

OTHER SUPPORTING PARTNERSHIP BOARDS: Isle of Wight Safeguarding Children Board
 Early Help Strategy Group
 Joint Child Health Commissioning Board
 Community Safety Partnership

ISLE OF WIGHT CHILDREN’S TRUST

PARTNERSHIP MAP



ACTIVITY: The collective areas of activity are set out below:

<p>Child development:</p> <p>A&E Admissions Alternative therapies Baby birth weights Breastfeeding Child immunisation rates Child obesity Children’s mental health Children’s oral hygiene Educational achievement Healthy Living Homelessness Hospital admissions Infancy deaths Sexual health Smoking cessation Substance misuse Teenage pregnancy School attendance</p>	<p>Corporate parenting:</p> <p>Child poverty Economic development Benefit entitlement My Life, a Full Life project NEET Nursery placements Personal budgets Recreational space Troubled Family Initiative</p> <p>Safer Communities:</p> <p>Anti- social behaviour Domestic Abuse Missing persons Road traffic accidents Youth Offending</p>
--	---

KEY AREAS OF PERFORMANCE: From this list, the strategy key work areas and associated performance indicators or ‘vital signs’ actively monitored and managed by the partnership boards are as follows:

HWB Strategy key work areas	
Early intervention to lay the foundations for strong parenting	
Ensuring families are confident in reaching out for support and help	
Ensuring parents, children and young people are able to make healthy choices for a healthy lifestyle	
Children and young people are confident in themselves and their relationships with others	
Young people succeed at school and into work	

KEY CHALLENGES FOR THE CHILDREN’S TRUST

- The impact of the Government’s deficit reduction programme across the public sector and specifically areas on services for children, young people and families. Councils have faced particularly tough spending cuts with significant reductions to their grants, resulting in a range of savings programmes.

-
- Government policy in the shape of the Welfare Reform Act 2012 and its impact on individuals and families as changes to the welfare benefit system are implemented.
 - Changes to education policy including the creation of Free Schools and Academies and changes to the national school funding framework
 - Compared to the national average, young people on the Isle of Wight have a lower than average understanding of sexual health issues which they should have learned in school through delivery of Sex and Relationship Education.
 - The Isle of Wight is the fifth worst top-tier local authority in terms of reducing under-18 conception rates since 1998 with only a 16.4% reduction compared to 40.6% nationally
 - Evidencing the Children's Trust has listened and responded to the views of children and young people as expressed in the 2012 Good Childhood Survey undertaken by The Children's Society

Continued on Next Page/

CURRENT PERFORMANCE POSITION: There are a range of performance indicators and supporting business intelligence currently used by the Children’s Trust to understand how well the Island is performing. In overall terms the current position for this outcome is:

Overall performance position



Majority of performance is on or above target, projects are meeting planned delivery dates, risk is managed appropriately and financial position stable

Summary

Good progress has been made by the Children’s Trust in delivering the agreed outcomes and actions to impact on the 5 priority areas as set out in their 2014-2017 Action Plan. Each priority area captures the key multi agency areas of focus for the Children’s Trust with clear links to individual agency strategies and policy documents. Key achievements to date are the implementation of the early help strategy, the review of CAHMS provision through the joint commissioning group and the significant improvement in school attendance across the Island.

HWB Strategy key work areas	Risk Position	Key Performance Indicators and progress to date	Latest position
<p>Early intervention to lay the foundations for strong parenting</p>	<p style="background-color: #92d050;"></p>	<p>CT Priority 2 – Helping children and young people to be safe and feel safe The early help strategy has been implemented and three locality hubs have been developed. There were 460 CAFs in place (as reported to the 24 June 2014 Children’s Trust meeting).</p> <p>The overall target for the Strengthening Families Programme is to ‘turn around’ 315 families by 31/03/2015. To date, positive results have been achieved for: 71 families in reducing youth offending and/or anti-social behaviour across the whole family and reduction in unauthorized school absence; 28 individuals for achieving work-related outcomes. In addition 723 children are being supported through Children’s Centres and 57 young people through targeted youth support. The Child Sexual Exploitation operational started as part of the LSCB structure in April 2014, and 15 young people are being supported (as reported to the 24th June 2014 Children’s Trust).</p> <p>In respect of young people feeling safe at school, the Hampshire Anti-Bullying Strategy has been adopted and an action plan is being developed. There will be an anti-bullying conference in October 2014 and an annual report produced in March 2015. Links with YOT are being explored for the conference and the LSCB has offered its support for this event.</p> <p>11 organisations have been awarded funding to deliver youth provision across the Island as part of the Isle of Wight Council’s new youth offer</p>	<p style="background-color: #92d050;"></p>

<p>Ensuring families are confident in reaching out for support and help</p>		<p>Priority 5 – Addressing the incidence and reducing the impact of poverty on the achievement and life chances of children and young people Families are accessing a range of employment and training services and support through Children’s Centres – all are graded as good or outstanding. Young people leaving care and finding employment, education or training is now at 98% and there are number of young people in university. The early help locality meetings have been well established. Quality assurance was implemented in January 2014 and an early help commissioning strategy is being developed for implementation in September 2014.</p>	
<p>Ensuring parents, children and young people are able to make healthy choices for a healthy lifestyle</p>		<p>Priority 1 – Securing children and young people’s mental, emotional and physical health The Joint Commissioning Group is the lead for this priority. CAMHS including Community CAMHS will be included in the joint emotional health and wellbeing strategy building on information from the Health Watch Report. A working group is being set up to develop a joint physical health and wellbeing strategy to improve support for children and young people. This will include representatives from key therapy services, paediatric services and GPs</p>	
<p>Children and Young People are confident in themselves and their relationships with others</p>		<p>Priority 4 – Inspiring and providing equal opportunities for all children and young people to achieve their goals and dreams The youth offending team is linking with the early help hubs as part of their new crime prevention service. This will deliver effective youth justice services across the Island and tackle youth crime and anti-social behaviour through partnership working. Participation by young people is a priority of all statutory agencies and a number of mechanisms are in place to positively engage and hear their voices (for example the planned Anti Bullying Conference in October 2014, the Youth Council and Children in Care Council, and the development of an app by the Clinical Commissioning Group called ‘check it out’.</p>	
<p>Young people succeed at school and into work</p>		<p>Priority 3 – Improving education to provide all children and young people with outstanding learning opportunities Attendance at school has improved significantly for all children, including children in care. Further evidence of the impact of the current school improvement programme will be available from the 2014 exam results.</p>	