

# Appendix A4

## 2019/20 Q4 and 2020/21 Q1 – REGENERATION & BUSINESS DEVELOPMENT

### Key Activities Q1

**Complete the full business case and masterplan for Newport Harbour (April 2020), Nicholson Road (March 2020) and Sandham (May 2020).**

***Newport Harbour:** The masterplan has been completed by Kay Elliot consultants - December 2019. The Cost Plan is now complete, and Montague Evans are fed this back into the viability assessment. Overall position is mixed viability picture and need for third party funding to support infrastructure – public realm etc across the development area is clear.*

*Supplementary Planning Guidance went to public consultation and is being summarised. Cabinet approval has been delayed to August due to Covid-19.*

***Nicholson Rd, Ryde:** Revised planning submission taking account of community and Island Roads comments is still being progressed and it is intended to be reviewed at September's Planning Committee. The submission will include a standalone solution for this site and there will be further statutory and public consultation required. Work on the full business case has been paused until planning approval is gained*

*Regeneration have commissioned traffic consultants to come up with an overall transport plan for Ryde, including the junctions we are looking at, of which junctions should be improved when and by whom.*

***Sandham Middle School:** In March 2020 Regeneration Members Board considered options for progressing with the tender in the light of current financial and agreed to progress on the basis of no financial input from the council. This was scheduled to be reviewed with providers in July 2020.*

**Continue to work with partners on the One Public Estate (OPE) schemes, including the Blue Light Hub and Pyle Street and Sandown Hub projects – full business case for one of these projects by March 2020 and others by October 2020**

***Pyle Street Hub:** Homes England rejected partnership bid led by IWC (with IWNHS Trust and Sovereign Housing) for the acquisition of the site for a “community hub” including an element of affordable housing. Homes England re marketed the site. Sovereign Housing Association have submitted an independent bid and have been successful in acquiring the site in principle but have now withdrawn.*

***Sandown Community Hub:** Relocation of some of the NHS community health team to the Barracks completed. Progress on purchasing MOD land to the front of the Heights complex has proved difficult to progress given change of personnel at MOD. The Civic Centre is currently surplus to requirements but is part of the council's wider property rationalisation plans.*

***Joint Blue Light Project (JBLP) Newport:** Progressing this project this is now a One Public Service priority, but progress has stalled due to difficulties agreeing which blue light service should lead and the key personnel to take it forward. The council through its OPE role has continued to explore issues through discussions with other JBLP's elsewhere to identify the issues, challenges and costs associated with any scheme to help inform the decision to progress.*

**Deliver the Island's Regeneration Strategy, developing a three-year programme of investment linked to the council's Medium-Term Financial Plan.**

*A number of key Regeneration staff were redeployed in various areas of the councils Covid-19 response. However, the strategy at the moment is to complete the necessary planning feasibility studies and planning approvals where already commenced.*

*The Programme underwent a substantive review in light of the financial impact to the council of the Coronavirus pandemic and its wider impact on other economic sectors such as Housing. The results of this review were shared with Members Regeneration Board in July 2020 who agreed which priorities will be taken forward over the next 18 months. HR and financial resources will be realigned to meet these objectives.*

**Continue with our public engagement programme to underpin area based social regeneration activities covering the whole Island.**

*An update was provided to the [Policy & Scrutiny Committee for Neighbourhoods and Regeneration](#) in February 2020.*

**Work to ensure the transfer of key sites, currently in the ownership of government departments or Homes England, into council ownership in support of housing and employment priorities, including land in Newport and East Cowes.**

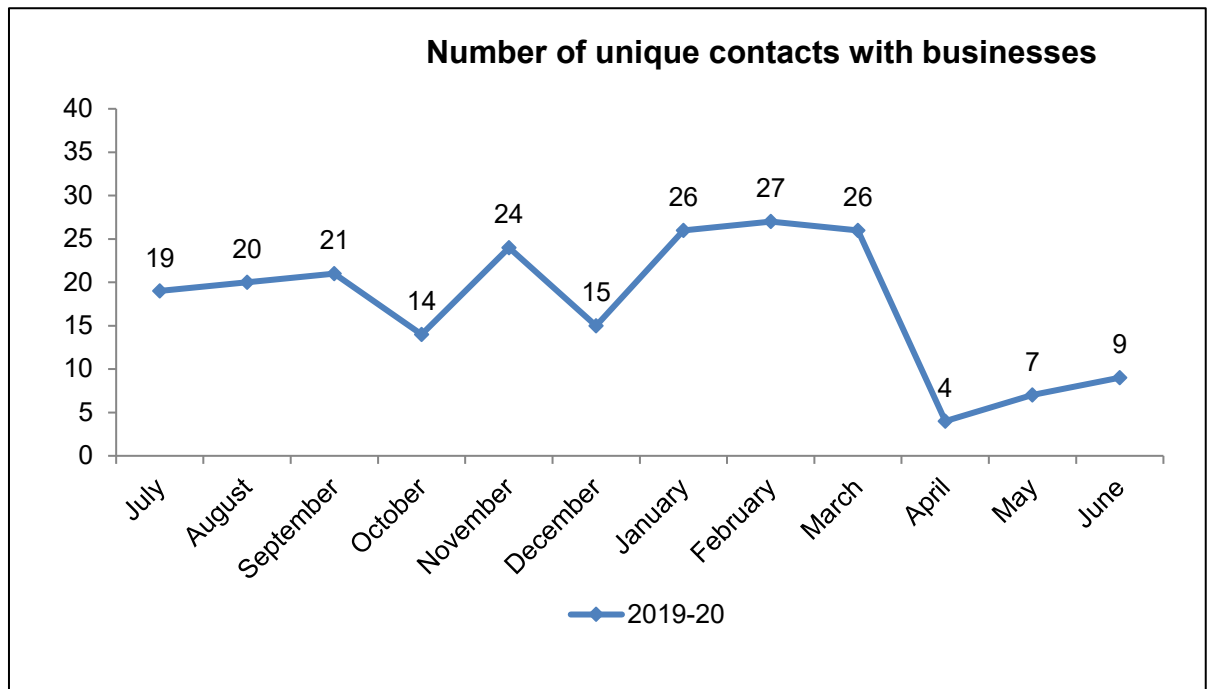
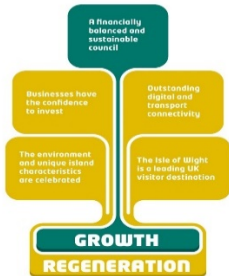
*Cabinet agreed delegate the decision to proceed with the purchase of East Cowes waterfront sites to the Leader and the Cabinet Member for Business Development and Regeneration subject to the final advice of the Director of Finance regarding the overall level of financial risk to the council*

**Intervene in the supply of housing to accelerate the delivery of new homes and increase the availability of suitable temporary accommodation and affordable housing for Island residents.**

*The Council has set up a company (iWight Homes Ltd) as a vehicle for the longer-term delivery of new homes on the Island*

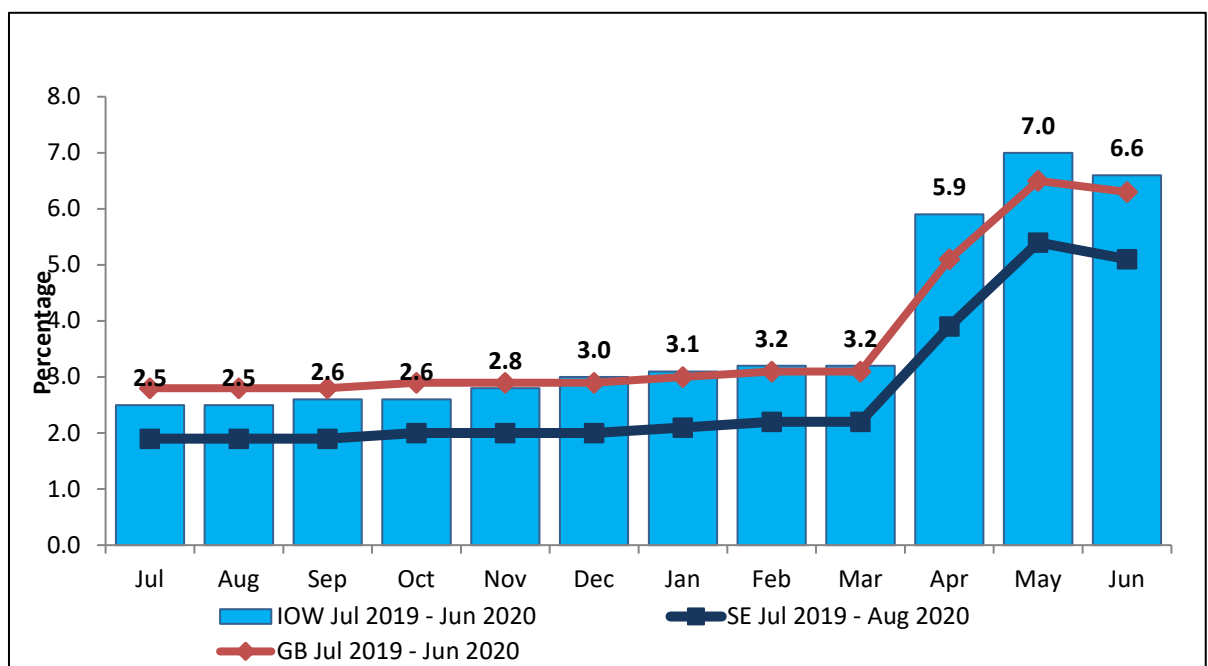
## Short term measures

Number of unique contacts with businesses (not in contact before)

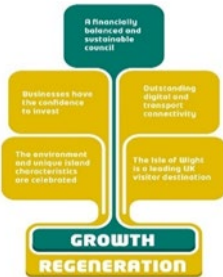
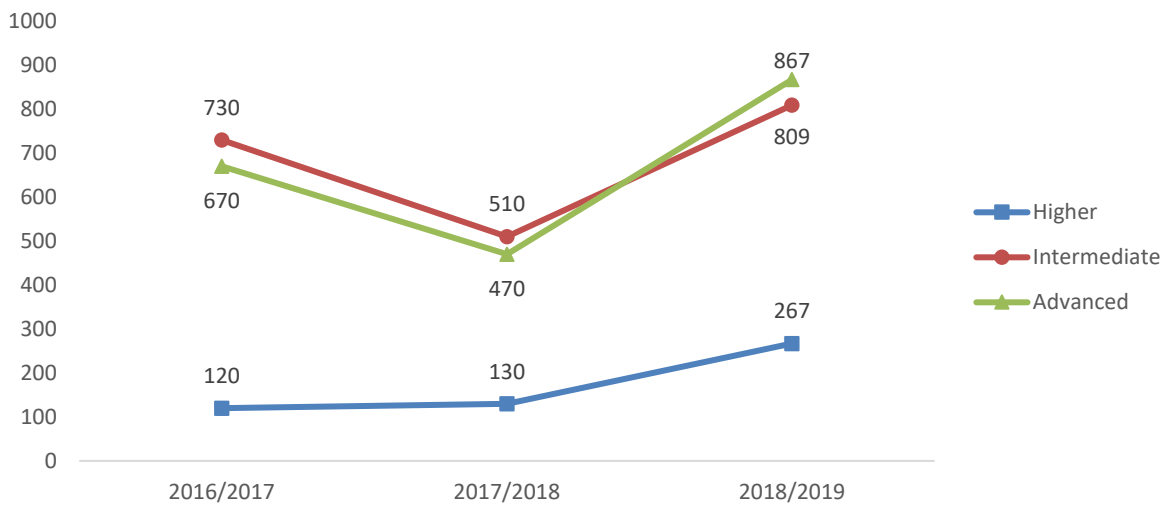


There were 79 unique contacts with businesses in Q4 2019/20, and 20 over the last quarter compared with 53 in Quarter 3 2019/20. Contact continues to be made with a larger variety of organisations from both the private and public sector, including discussions around Covid-19 pandemic effects, adaptation and future planning.

Percentage of out of work benefit claimants per month



The **number of out of work benefit claimants** (measure 1) has increased significantly due to the Covid-19 pandemic from 2,580 at the end of March 2020 to 5,325 at the end of June 2020. This has though fallen a little from a peak of 5,580 at the end of May 2020. The

	<p>percentage of IW workforce that claims out of work benefits is 6.6 per cent at the end of June (down from a peak of 7 per cent at the end of May). Averages for Great Britain are 6.3 per cent and 5.1 per cent across the SE Region. Although the IW rates are higher than both the national and regional figure there are signs that the rate is falling faster on the IW.South East.</p>																
<p><b>Number of apprenticeship starts.</b></p> 	 <table><tr><th>Year</th><th>Higher</th><th>Intermediate</th><th>Advanced</th></tr><tr><td>2016/2017</td><td>120</td><td>730</td><td>670</td></tr><tr><td>2017/2018</td><td>130</td><td>510</td><td>470</td></tr><tr><td>2018/2019</td><td>267</td><td>809</td><td>867</td></tr></table> <p>The IWC has been named as one of only 33 local authorities in the country (one in only ten upper/single tier authorities) to have met the target for ‘apprenticeship starts’ cumulatively since the introduction of the apprenticeship levy two years ago. The figures are provided by Hampshire CC and refer to the last three academic years.</p> <p>Intermediate apprenticeships are level 2 qualifications equivalent to GCSE passes at Grades 4 to 9.</p> <p>Advanced apprenticeships are level 3 qualifications and are equivalent to A level passes.</p> <p>Higher apprenticeships lead to qualifications at level 4 (degree level) and above.</p> <p><b>Figures available for the first 2 quarters of 2019/20 are:-</b></p> <p><b>Advanced - 410</b> <b>Higher – 230</b> <b>Intermediate - 290</b></p> <p><b>2019/20 end of year stats should be available in November 2020.</b></p>	Year	Higher	Intermediate	Advanced	2016/2017	120	730	670	2017/2018	130	510	470	2018/2019	267	809	867
Year	Higher	Intermediate	Advanced														
2016/2017	120	730	670														
2017/2018	130	510	470														
2018/2019	267	809	867														