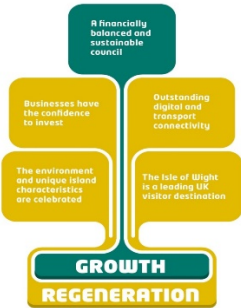


## Appendix A6 Q3 – PLANNING & HOUSING RENEWAL

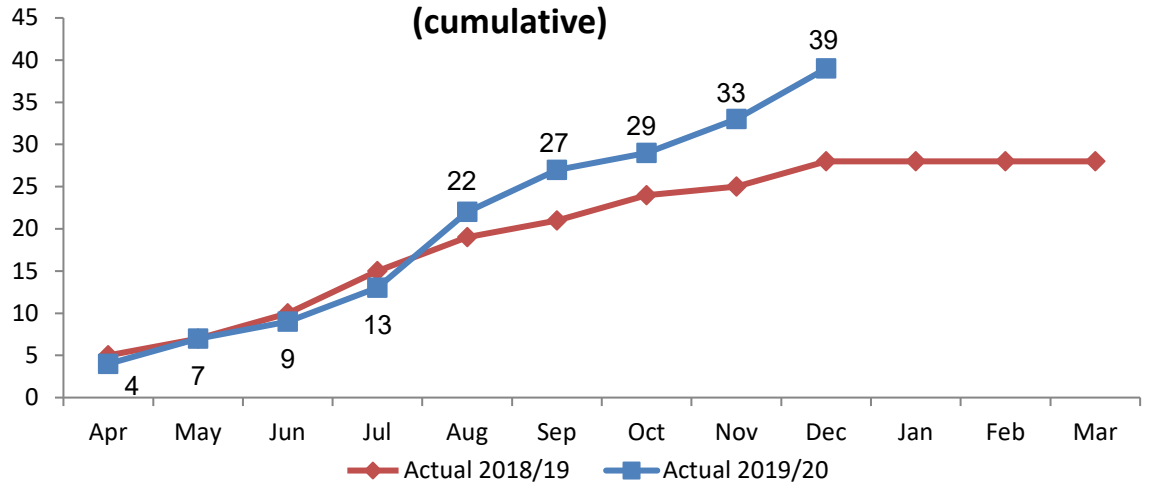
<b>Key Activities</b>
<p><b>Develop and implement the outcomes of the business case for the provision of extra care housing and seek the funding for its delivery, utilising existing public/private development partnerships to bring forward council owned assets, such as Sandham</b></p> <p><i>Sandham update is provided under the Regeneration portfolio.</i></p>
<p><b>Develop a Housing Delivery action plan in response to the government's direction by August 2019</b></p> <p><i>Housing delivery company/vehicle established.</i></p> <p><i>Housing campaign commenced.</i></p>
<p><b>Review the Island Planning Strategy (IPS) so that it is consistent with the aspirations of the council through area-based regeneration policies and develop the policy document and its associated evidence base to ensure that it is successful at examination</b></p> <p><i>The timescale for the Island Plan is under review to provide for additional time to review housing in particular.</i></p>

## Short term measures

### Number of major planning applications received (cumulative)

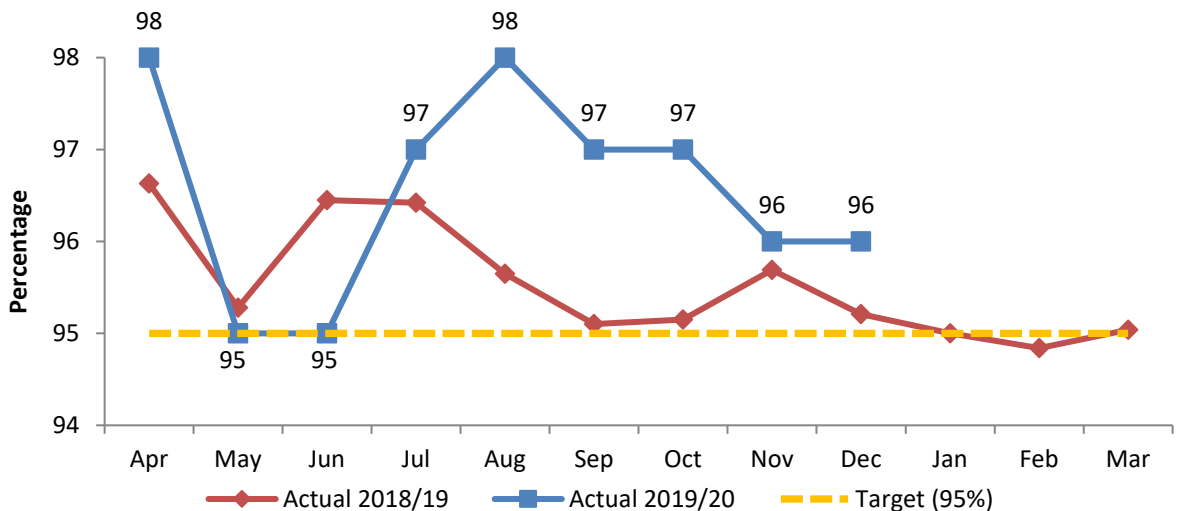
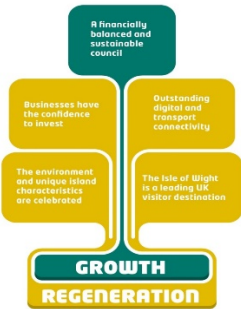


### Number of major planning applications received (cumulative)



The number of major planning applications received is increasing at a steady rate in excess of the rate of the previous year. In fact, by the end of October the number of major applications received was already in excess of that for the full 2018/19 financial year.

### Percentage of all planning applications determined within 26 weeks



Latest benchmarking information shows that for the first quarter of 2019/20 the IWC processed minor planning application far faster than other similar authorities. However, the speed in which major developments were determined was considerably slower.

	Isle of Wight Council performance in Q1 19/20	CIPFA nearest neighbour performance in Q1 19/20
% of minor developments processed within 8 weeks	97	86
% of major developments processed within 13 weeks	57	86