

Appendix A4 Q3 – REGENERATION & BUSINESS DEVELOPMENT

Key Activities Q3

Complete the full business case and masterplan for Newport Harbour (April 2020), Nicholson Road (March 2020) and Sandham (May 2020).

***Sandham Middle School:** Invitation To Participate on Dialogue responses were received in December 2019 and these are now under consideration for financial viability and quality, decision likely to be made in March 2020.*

***Newport Harbour:** The final draft of the Masterplan proposal was presented to the Newport Harbour Members Regeneration Board in December 2019. This included all feedback received in the public consultation that ran earlier in the year. The final proposal will be published in March 2020.*

***Nicholson Rd, Ryde:** Discussions are continuing with statutory consultees to the planning application, with the aim to resolve any outstanding issues in Quarter 4. Plans will be available for further public consultation following any changes to or new information within the application.*

Continue to work with partners on the One Public Estate (OPE) schemes, including the Blue Light Hub and Pyle Street and Sandown Hub projects – full business case for one of these projects by March 2020 and others by October 2020

***Pyle Street Hub:** A joint bid between IWC and a Registered Social Landlord to Homes England was made end of October 2019 but the decision has been delayed due to the General Election in December – A decision is expected during January 2020.*

Deliver the Island's Regeneration Strategy, developing a three-year programme of investment linked to the council's Medium-Term Financial Plan.

Key activity/milestones for Q3 are discussed above.

Continue with our public engagement programme to underpin area based social regeneration activities covering the whole Island.

An update was provided to the [Policy & Scrutiny Committee for Neighbourhoods and Regeneration](#) in February 2020.

Work to ensure the transfer of key sites, currently in the ownership of government departments or Homes England, into council ownership in support of housing and employment priorities, including land in Newport and East Cowes.

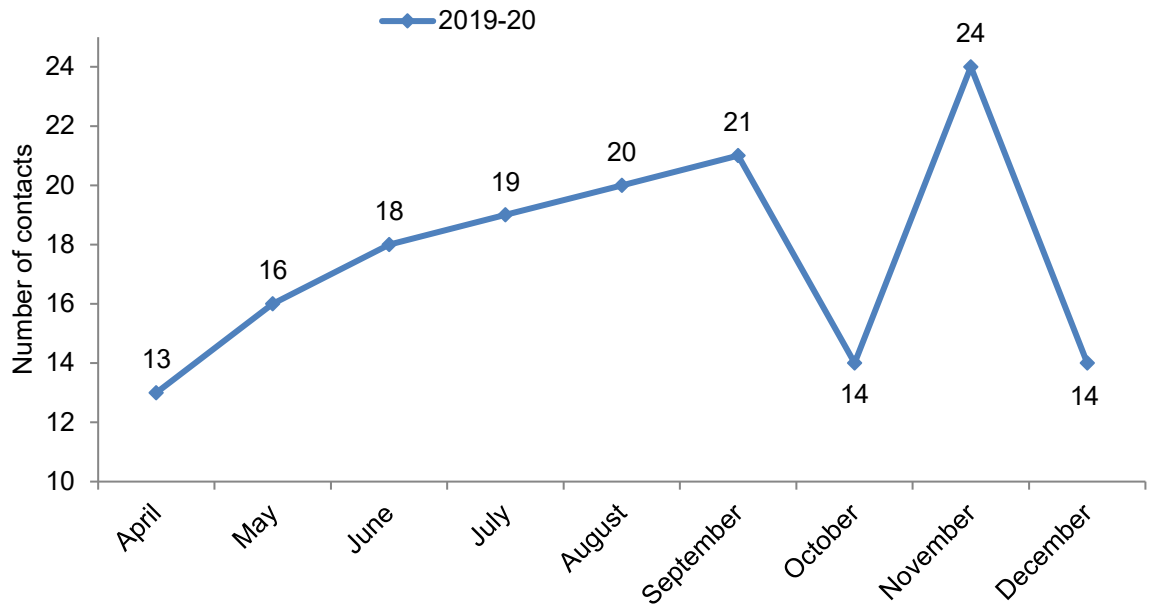
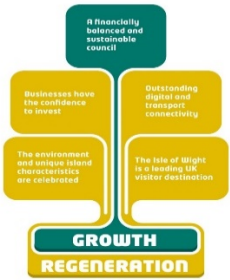
IWC have agreed a price with Homes England to acquire the site at Medina Yard/Venture Quays and Heads of Terms are being drawn up with the aim for completion of the sale in Quarter 4.

Intervene in the supply of housing to accelerate the delivery of new homes and increase the availability of suitable temporary accommodation and affordable housing for Island residents.

The Council has set up a company (iWight Homes Ltd) as a vehicle for the longer term delivery of new homes on the Island

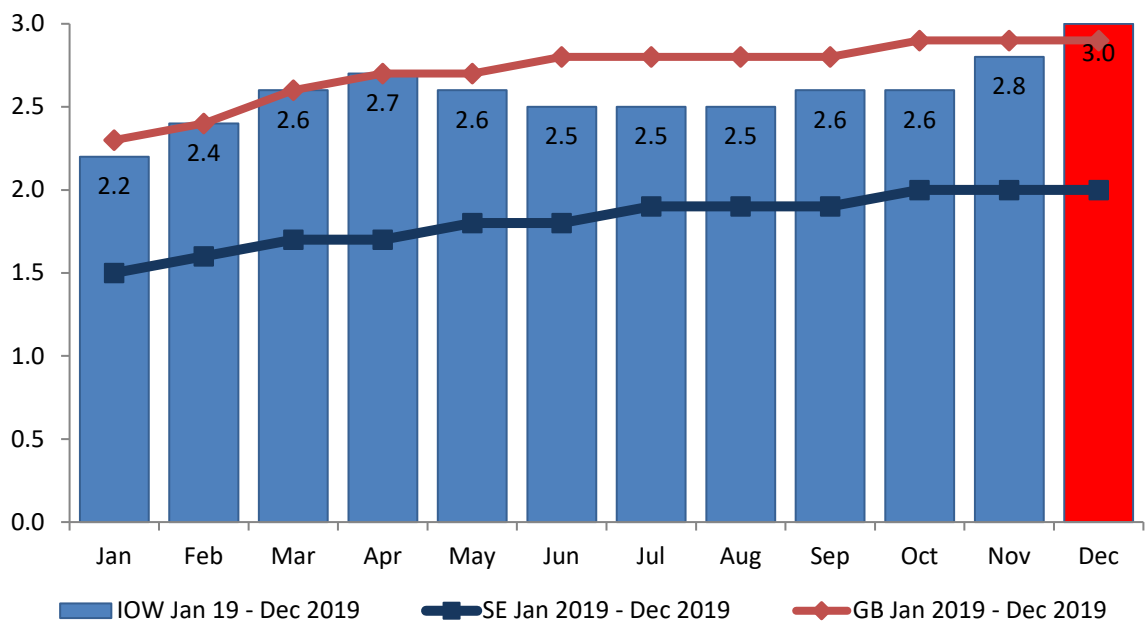
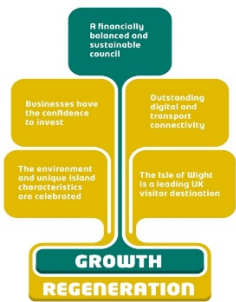
Short term measures

Number of unique contacts with businesses (not in contact before)



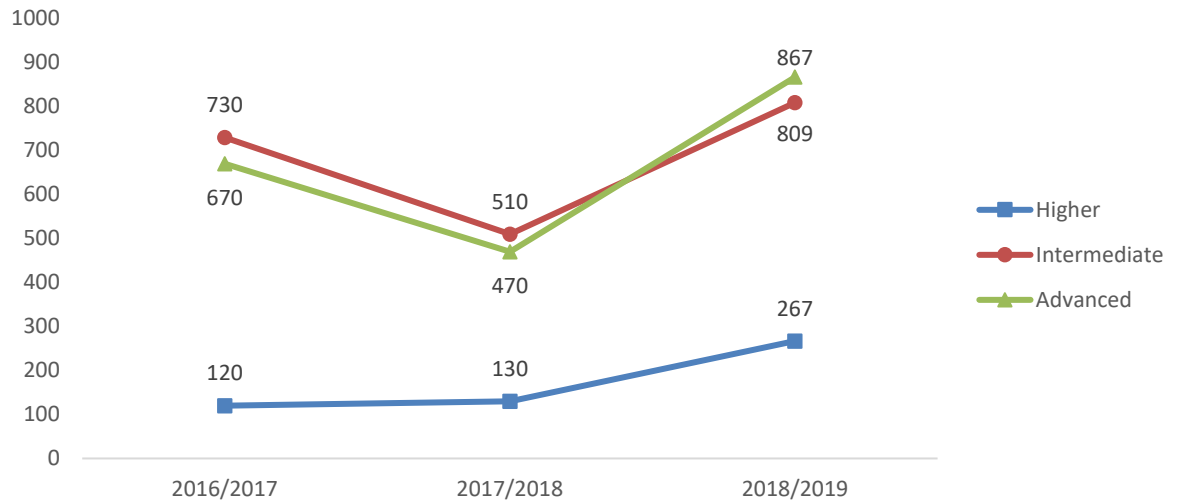
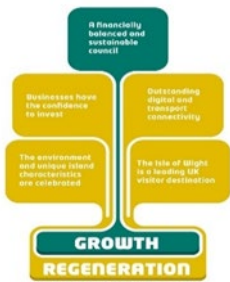
There were 52 unique contacts with businesses over the last quarter compared with 60 in Quarter 2 and 46 in Quarter 1. Contact continues to be made with a larger variety of organisations from both the private and public sector.

Percentage of out of work benefits claimants per month



The Isle of Wight figure continues to rise whilst regional and national figures remain constant. The percentage of IOW people claiming out-of-work benefits is now above the national average (2.9%) for first time since March 2018. The average for the SE Region is 2.0%. Three per cent of the IOW Workforce (aged 16+) equates to 2,385 people and increase of 110 since November 2019 and 335 since September 2019.

Number of apprenticeship starts.



The IWC has been named as one of only 33 local authorities in the country (one in only ten upper/single tier authorities) to have met the target for 'apprenticeship starts' cumulatively since the introduction of the apprenticeship levy two years ago. The figures are provided by Hampshire CC and refer to the last three academic years.

Intermediate apprenticeships are level 2 qualifications equivalent to GCSE passes at Grades 4 to 9.

Advanced apprenticeships are level 3 qualifications and are equivalent to A level passes.

Higher apprenticeships lead to qualifications at level 4 (degree level) and above.