

# Appendix A10 Q3 – PROCUREMENT, WASTE MANAGEMENT, SPECIAL PROJECTS & FORWARD PLANNING

## Key Activities Q3

**Ensure the completion and implementation of the new waste to energy plant, to time and budget and that once open the plant delivers as per the requirements of the waste contract and the commercial aspects of the contract are delivered.**

*The Mechanical Treatment plant has achieved acceptance certification with the majority of snags having been removed*

*The Energy Recycling Facility plant installation has been delayed due to programming and supply chain issues. Pre-cold commissioning activities will now take place with acceptance testing scheduled for early spring*

**Complete the review of all premises requiring commercial waste collections and develop an appropriate commercial offer to the owners of the premises**

*The action is completed*

**Develop a corporate approach to the minimisation of single use plastics**

*The new Procurement Strategy was approved by [Cabinet in November 2019](#) and includes reference to the reduction of single use plastics as a consideration when purchasing.*

**Ensure that all procurement activity includes the need for good environmental performance from goods and services**

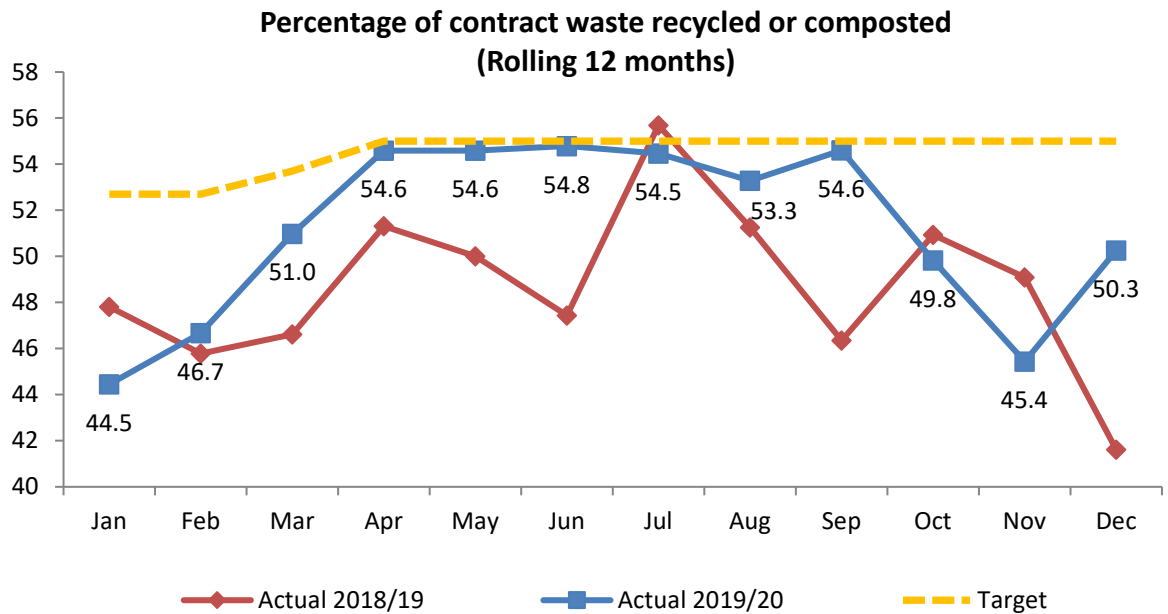
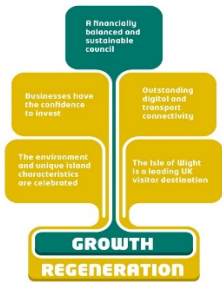
*The new Procurement Strategy was approved by [Cabinet in November 2019](#) and is based around four key themes - leadership, behaving commercially, local community, and economy & environmental considerations.*

**Review energy management activity and procurement of energy for all council owned and operated assets to ensure it provides economic and environmental best value**

*Energy continues to be procured on a fixed term fixed price basis through Laser (Kent CC) with the most recent contracts set to run from 1 October 2019 to 30 September 2020. Water contracts procured through Crown Commercial services have just been extended with Business Stream to run through until 31 January 2021.*

## Short term measures

Percentage of contract waste recycled or composted (Rolling 12 months)



Performance in this area experienced an expected seasonal dip during winter but the recycling rate for December 2020 of 50.3% was higher than the rate at the same time in 2019 (49.1%). The amount of waste being diverted from landfill is higher (55.0%) than at the same point last year (52.5%).