

## Appendix A5 Q2 – INFRASTRUCTURE & TRANSPORT

### Key Activities

**Continue to work with the Transport Infrastructure Board to improve infrastructure, public transport and mainland connectivity.**

*Ongoing: Progress on discounted travel for those with medical appointments and potential funding for improvements at Ryde interchange inform initial plan priorities.*

**Work with communities and businesses to deliver the agreed parking strategy by taking a phased approach to its implementation, including a review of permitting and pricing arrangements**

*Works continues on processing requests for Resident Parking schemes across the island; to date 89 roads have been subject to requests. Of these, 36 have now been surveyed for parking stress; 25 met the criteria and moved to resident consultation and voting, of these, 3 have been subject to favourable residents consultation and will be implemented in Year 1*

*The consultancy firm (WYG) that has been engaged to review the primary and supporting recommendations of the parking strategy have made 2 presentations to the Parking Strategy Group (Chaired by the Leader, also attending are the portfolio holder and the Director of Neighbourhoods). These presentations have shown initial findings from audits on some car parks showing usage etc. The Final report from WYG is due in Spring 2020 containing recommendations for on and off street parking any new potential car parking sites.*

**Ensure the timely completion of the core investment period works for the highways PFI in 2021**

*A Highways Contract Management Team is in place to ensure proper audit and assurance of Milestone 14 (end of core investment period) by April 2021. Discussions with Island Roads are underway to develop a joint audit and assurance programme of all aspects included in Milestone 14. An independent certifier will also be used to assess delivery against the milestone*

**Develop and implement externally funded works to open up regeneration sites in and around Newport and ease congestion in the town**

*Detailed scheme designed and consulted on. Hampshire County Council have carried out a review of the cost plan and overall traffic modelling. Delivery schedule to be confirmed upon completion and analysis of this independent review.*

*ST Mary's roundabout works proceeding on schedule*

**Developing and delivering local safety- based highway improvement schemes through an annual capital programme of works.**

*Highways safety and improvement register has been reviewed and ranked to rationalise the number of interventions required. An annual programme of safety and capacity related schemes are in development. The top ten schemes have been included for capital bids for the 2020/21 and 2021/22 budgets. Also included in the capital bids is a programme of district by district traffic regulation order (TRO) schemes to resolve a number of parking and traffic flow issues. This will be a two-year rolling scheme where every district is reviewed once every two years. There are six districts on the IW which can be viewed on [Island Roads website](#).*

*Amongst the bids for 2020/21 is one for improvements at Smallbrook junction*

**Review the council's integrated transport plan and develop a transport infrastructure programme.**

*New priority – work yet to commence.*

**Continue to represent the Island on all transport related matters through partnership groups such as Solent Transport and Transport for South East.**

*Work is ongoing and the Council is active involved in a number of partnership groups.*

**Continue to work on the Ryde Transport Hub as part of the wider Transforming Cities Projects (in partnership with Hampshire CC, and Portsmouth City Council) in order to improve local and regional connectivity.**

*Work is ongoing to develop the bid for submission to the Department of Transport by 28 November 2019. The submission is a joint bid between Southampton City Council, Portsmouth City Council and the Isle of Wight Council*

**Complete an Island wide consultation to understand the communities' views on re-opening Undercliff Drive and identify appropriate next steps as following the consultation exercise.**

*Consultation results have been analysed and a bid to the Department of Transport maintenance fund was submitted in October 2019*

**Undertake a feasibility study to understand the potential cost benefit analysis for a Medina Bridge.**

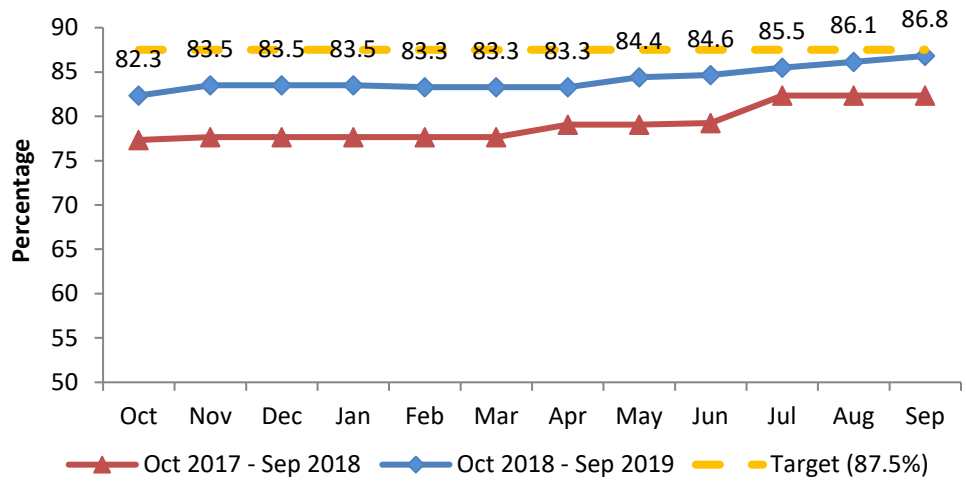
*Hampshire CC have been procured to undertake a high level feasibility review including traffic modelling analysis and examination of potential crossing locations. Pending results of this study a more detailed study may be procured that looks at the cost benefits having such a crossing*

**Complete the delivery of the Sustainable Transport programme (by July 2020)**

*New priority – work yet to commence.*

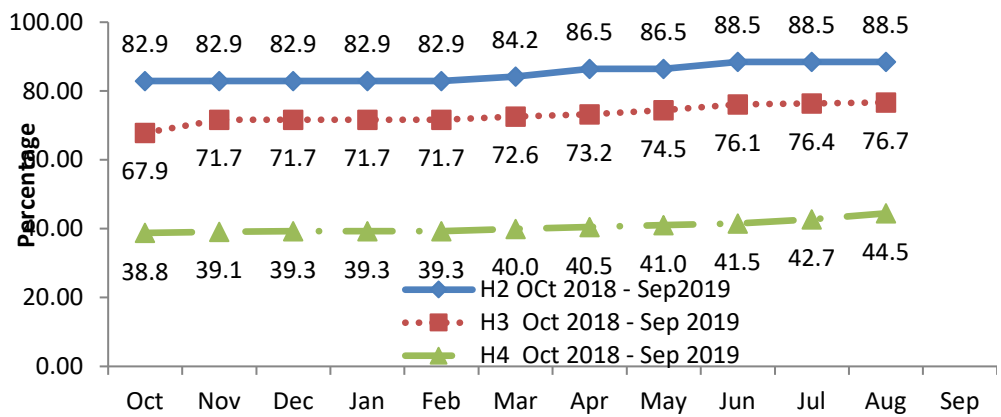
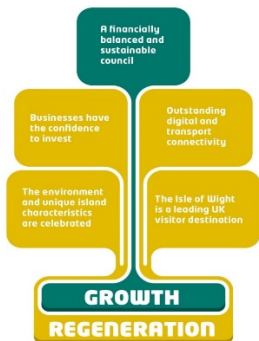
# Short term measures

**Percentage of principal (Hierarchy 1) roads rehabilitated and meeting PFI contract specification**



H1 roads continue to be upgraded, nearing target of 87.5% (September 2019 86.81%)

**Percentage of non-principal (Hierarchy 2, 3 and 4) roads rehabilitated and meeting PFI contract specification**



## Strategic Risks

<p>The council fails to achieve the required outcomes from its significant contractual relationships and fails to successfully resolve some anomalies in the contracts' interpretation (in relation to the 25-year highways PFI contract)</p>			<p>Assigned to: Director of Neighbourhoods</p>		
Inherent score	Target score	Current score	Previous scores		
			Sep 19	Jul 19	May 19
<b>16 RED</b>	<b>5 GREEN</b>	<b>8 AMBER</b>	<b>8 AMBER</b>	<b>9 AMBER</b>	<b>9 AMBER</b>
<p>Risk score reduced</p>					