

Appendix A4 Q2 – REGENERATION & BUSINESS DEVELOPMENT

Key Activities

Complete the full business case and masterplan for Newport Harbour (April 2020), Nicholson Road (March 2020) and Sandham (May 2020).

***Newport Harbour** - Master proposal to be presented to members on 11 December 2019 which will include a summary of all the feedback received in the earlier public consultation.*

***Nicholson Rd** -. Consultation on planning application has now closed and the IWC is now responding to statutory and public consultees and an assessment will be made as to whether a re-submission is required. A bid has been made to the LEP for phase 1 infrastructure funding. (Phase 1 to consist of approximately 15 homes and a GP's surgery)*

***Sandham Middle School** – Will be a flagship Island Independent Living Scheme with around 80 units with additional on site facilities such as a children's nursery. Tendering process for a joint venture partner currently in progress with the deadline for return of tenders set for December 2019.*

***Medina Avenue** – Planning permission has been granted for six 3-bed homes (five private rent sector and one affordable rented). Originally scheduled to be completed by Christmas 2019 there was a delay on the site due to badgers. This issue has been resolved with appropriate licensing in place and demolition and clearance of the site will commence shortly*

Continue to work with partners on the One Public Estate (OPE) schemes, including the Blue Light Hub and Pyle Street and Sandown Hub projects – full business case for one of these projects by March 2020 and others by October 2020

***Blue Light Hub (BLH)** - Reviewed by OPS Executive to agree Senior Responsible Officer and Project resource to conclude feasibility report. Meeting scheduled in Quarter 3 to drive forward with decisions made.*

***Pyle Street Hub** - A resubmission to Homes England for a joint bid between IWC and a Registered Social Landlord happened before the end of October 2019*

Work with businesses and training providers to develop a plan for increasing the number of apprenticeship placements and reduce the number of young people not in education, employment or training (NEET)

The Island Youth Investment Programme (IYIP) is the council's commitment to provide 200 new employment opportunities by 2020, including Traineeships and Apprenticeships. The Council itself has employed close to 100 apprentices. Work continuing with IW College and other providers on producing entry level courses is ongoing and an IW Higher Education prospectus is in place

Deliver the Island's Regeneration Strategy, developing a three-year programme of investment linked to the council's Medium-Term Financial Plan.

The Strategy "Inspiration Island" was approved by Cabinet in June 2019. Cabinet also recommended the strategy to other stakeholders in public, private and community sectors on the Isle of Wight and encourages collective endorsement and ownership of its aims and objectives.

Continue with our public engagement programme to underpin area based social regeneration activities covering the whole Island.

This is the continuation of The Wight We Want consultation. Area workshops are to continue. Focus has shifted now that the strategy has been completed on to supporting local project groups in each of the six regeneration areas.

Work to ensure the transfer of key sites, currently in the ownership of government departments or Homes England, into council ownership in support of housing and employment priorities, including land in Newport and East Cowes.

IWC have agreed a price with Homes England to acquire the site at Medina Yard/Venture Quays and Heads of Terms are being drawn with the aim for completion of January 2020

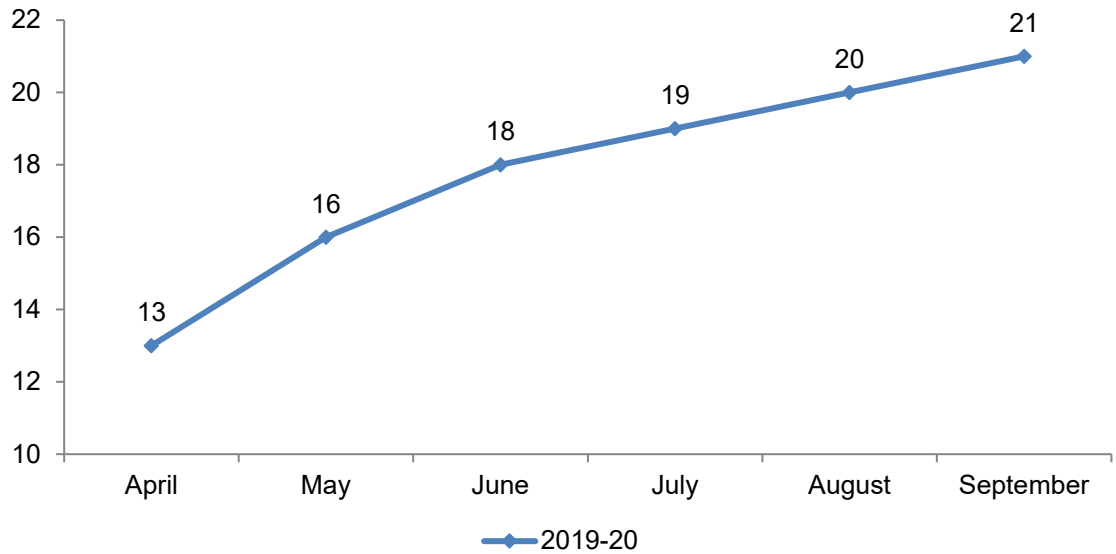
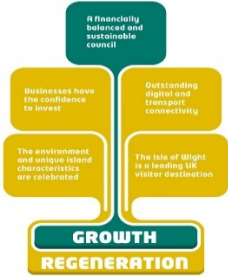
IWC discussions with Ministry of Justice continue over the Camp Hill site primarily to establish the cleansing costs for the site which will influence the suitability/viability of the site

Intervene in the supply of housing to accelerate the delivery of new homes and increase the availability of suitable temporary accommodation and affordable housing for Island residents.

There has been a review of all options for homeless provision. Sites were discussed within the Council's estate and other properties available to us. A cross departmental project team identified the Barton Site as a solution for this winter. This facility was opened as of November 2019

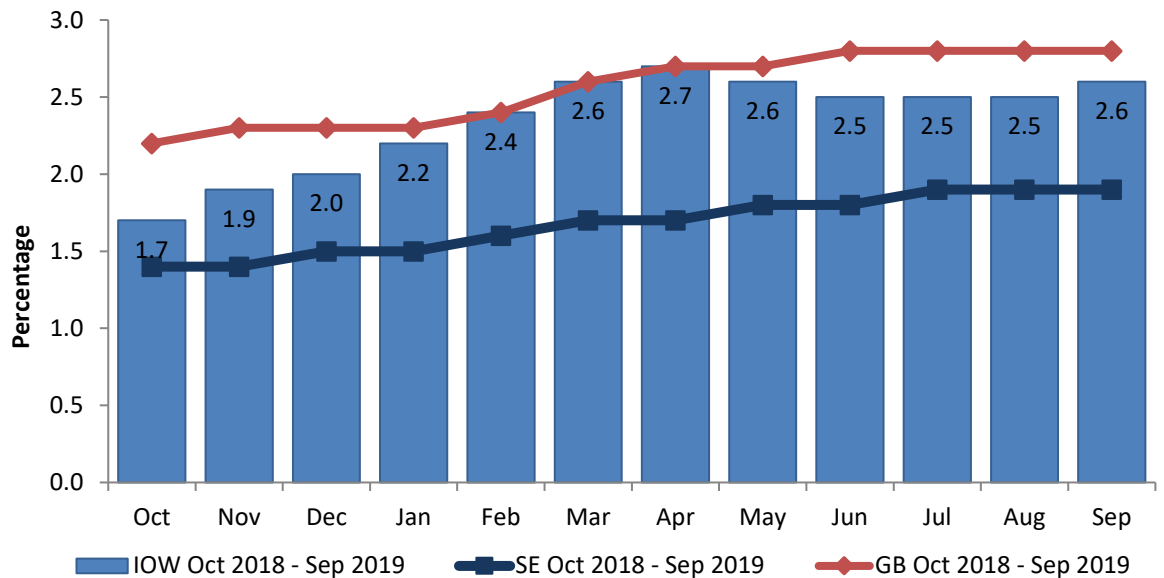
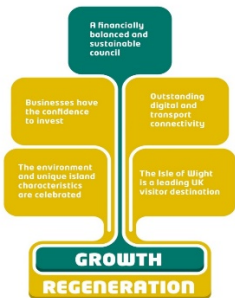
Short term measures

Number of unique contacts with businesses (not in contact before)



Unique contacts with businesses over the last quarter have increased month by month including larger corporations and smaller local businesses.

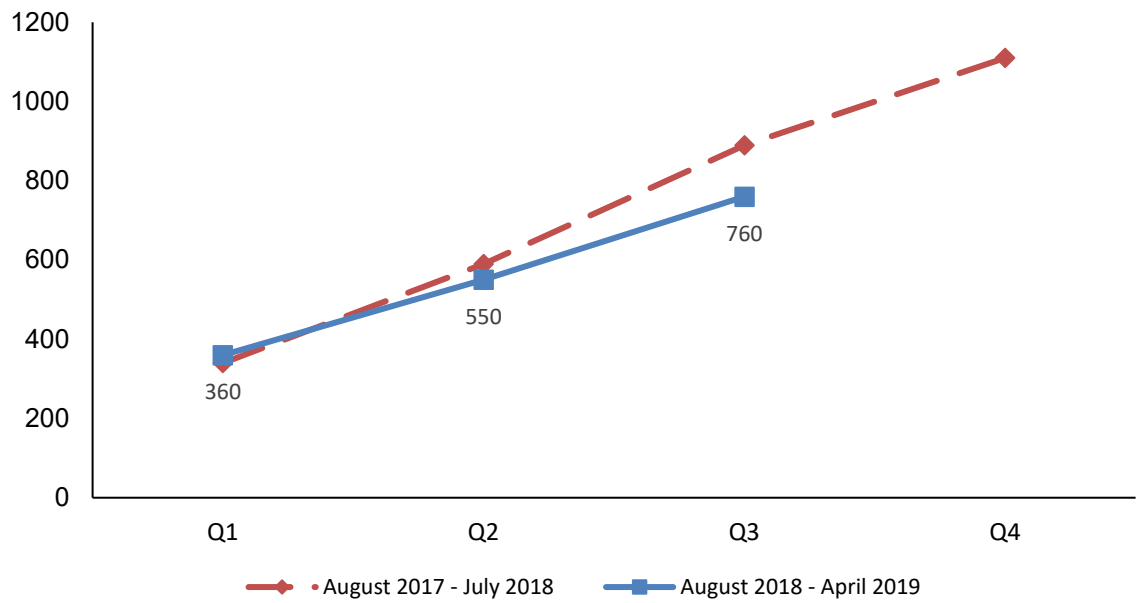
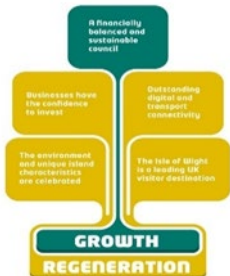
Percentage of out of work benefits claimants per month



The Isle of Wight's rate of out of work benefit claimants remained more or less constant over the last quarter likely due to the continued availability of seasonal employment. The percentage of people claiming benefits on the Isle of Wight is higher than the South East percentage (1.8 per cent) but lower than the national figure (2.8%). Seasonal trends are likely to mean that the IW level increases over the next two quarters. At the end of September 2.6% of 18-64 year olds eligible to work were claiming out of work benefits, this represents 2,050 people

Number of apprenticeship starts.

Source: Education and Skills Funding Agency (Cumulative)



The IWC has been named as one of only 33 local authorities in the country (one in only ten upper/single tier authorities) to have met the target for 'apprenticeship starts', cumulatively since the introduction of the apprenticeship levy two years ago.