

Appendix A8 Q4 – COMMUNITY SAFETY & PUBLIC PROTECTION

Key Activities

Work with strategic partners and key stakeholders to ensure the Island has effective and robust arrangements to ensure the safety of the community at all times

Hampshire FRS continue to provide support through the Delivering Differently in Partnership arrangements, with further development taking place in preparation to create a Combined Fire Authority.

Strengthening our response arrangements through two successful recruitment courses in the last twelve months (bringing an additional 13 on-call personnel into the service), has seen a rise in the overall availability of our fire appliances. IWFRS have also seen an increase in the percentage of both 'critical' and 'non-critical' incidents where response standards for attendance times have been met. Noting a similar performance measure, in partnership with the Isle of Wight Ambulance Service (IWAS) the Fire-based co-responders continue to exceed their IWAS target attendance times.

IWFRS Prevention activity within this period has included a multi-agency 'School Safety' three day workshop. Timed to be delivered prior to the summer break, 38 primary schools and around 1,070 pupils were educated in the potential hazards of fire, open water, building sites and farms. The workshop also included a session on first aid. IWFRS membership within the Integrated Localities (IL) continues to build relationships with partner agencies supporting the most vulnerable members of our community. IL referrals for Safe and Well visits (fire-related health checks and installation of smoke alarms in a domestic setting) consistently support our aim to deliver over 80% of these checks within vulnerable settings.

Other prevention activity for the period included:

- *72 hours of cycle training to nine primary schools through the British Cycling Bikeability course.*
- *26 Island motorcyclists trained through the 'Biker down' first aid course.*
- *13 Speed Awareness courses delivered to 300 Island drivers in partnership with Hampshire Constabulary*
- *'Head On' road safety initiative delivered to 190 secondary school pupils in partnership with Hampshire Constabulary and IW Ambulance.*
- *Road Safety assembly to 384 year 8 & 9 pupils at Medina College.*
- *Four 'Firewise' (juvenile fire-setting intervention) cases referred from the Youth Offending Team.*
- *Twelve fire prevention group talks to a variety of third sector partners.*

Ensure the smooth transition of the fire service to the new combined fire authority for Hampshire and the Isle of Wight, subject to the Secretary of States' approval.

The work to create a new Combined Fire and Rescue Authority (CFA) for the councils of Hampshire, Isle of Wight, Portsmouth and Southampton has progressed well. The continued unanimous support of all the affected authorities, plus the Police and Crime Commissioner has been a positive factor. Work progressed on a submission to the office of the Home Secretary. Work to prepare both services to come together under a new single CFA is progressing as required on the revised timeline.

Ensure the Isle of Wight's needs are fully represented by taking a full and active role in the new combined fire authority for Hampshire and the Isle of Wight.

Ongoing – shadow authority to be established in 2020.

Contribute to the development of a new Integrated Risk Management Plan for the Hampshire and the Isle of Wight Fire Authority and scrutinise its delivery.

A single plan is being developed.

Review the work and effectiveness of the Community Safety Partnership.

Corporate Scrutiny [received an update on the partnership in June 2019](#) where the priorities for 2019/20 were set out.

Review the delivery of Regulatory Services and their impact in protecting the Island's community.

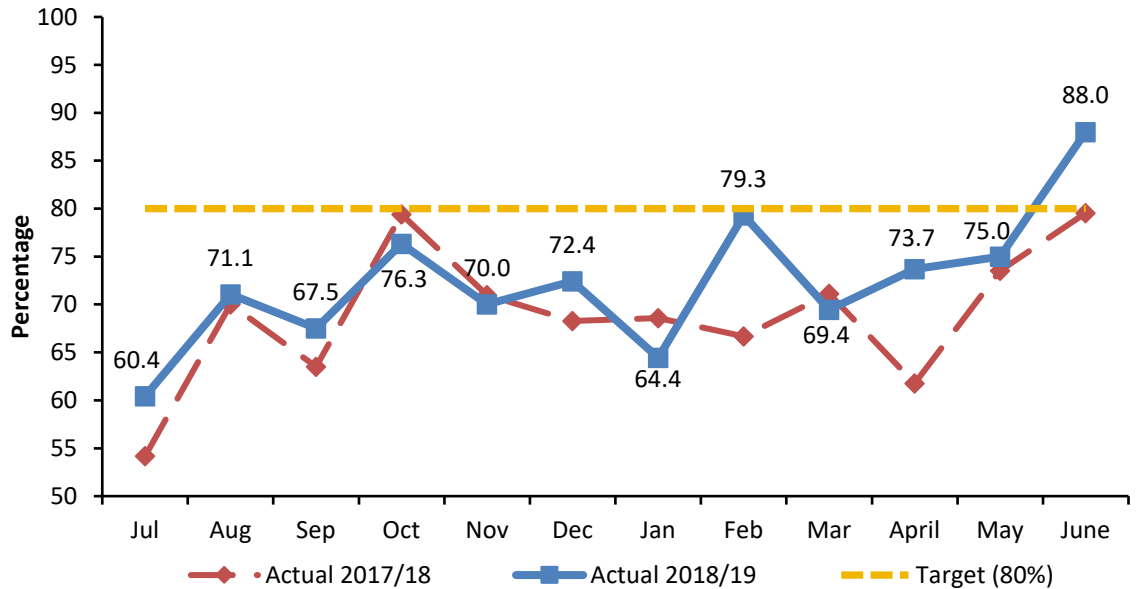
Activity in the first quarter of the year has resulted in:

- 74 inspections for food safety
- 57 new business registrations (food)
- One prosecution for food safety offences
- 449 licence applications processed
- 767 requests for service by the public (eg complaint about a business, nuisance etc)
- 29 FOIs dealt with
- £117,287 saved to consumers by Trading Standards interventions
- Response to a community safety residents survey revealed that 86.3% of responders felt safe in their community

DRAFT

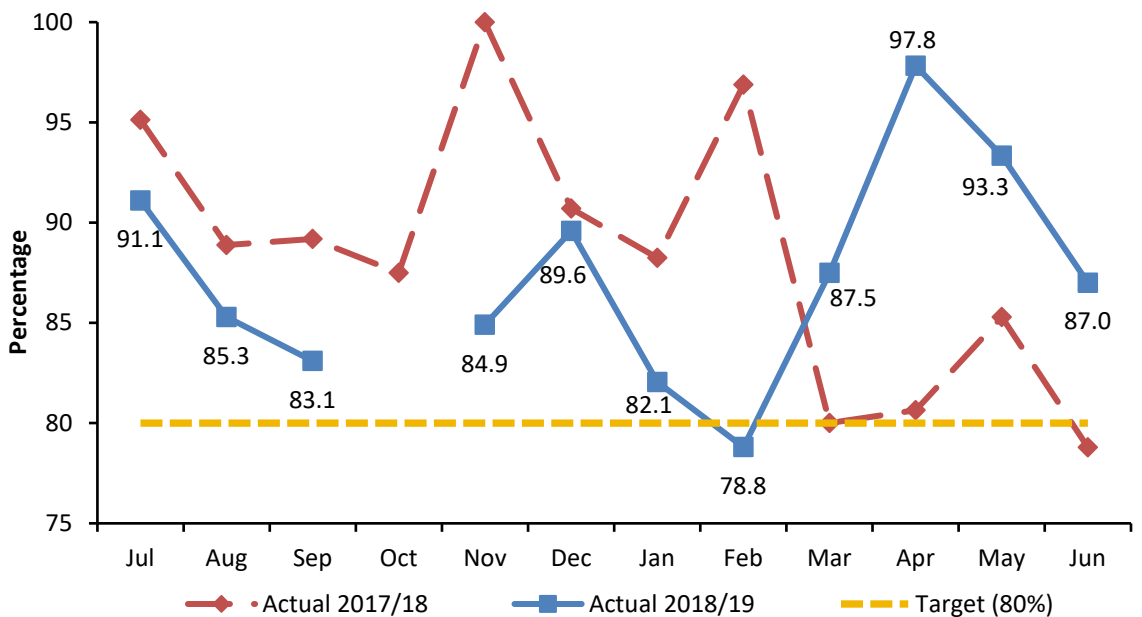
Short term measures

Percentage of critical incident calls (fire only) responded to within 10 minutes



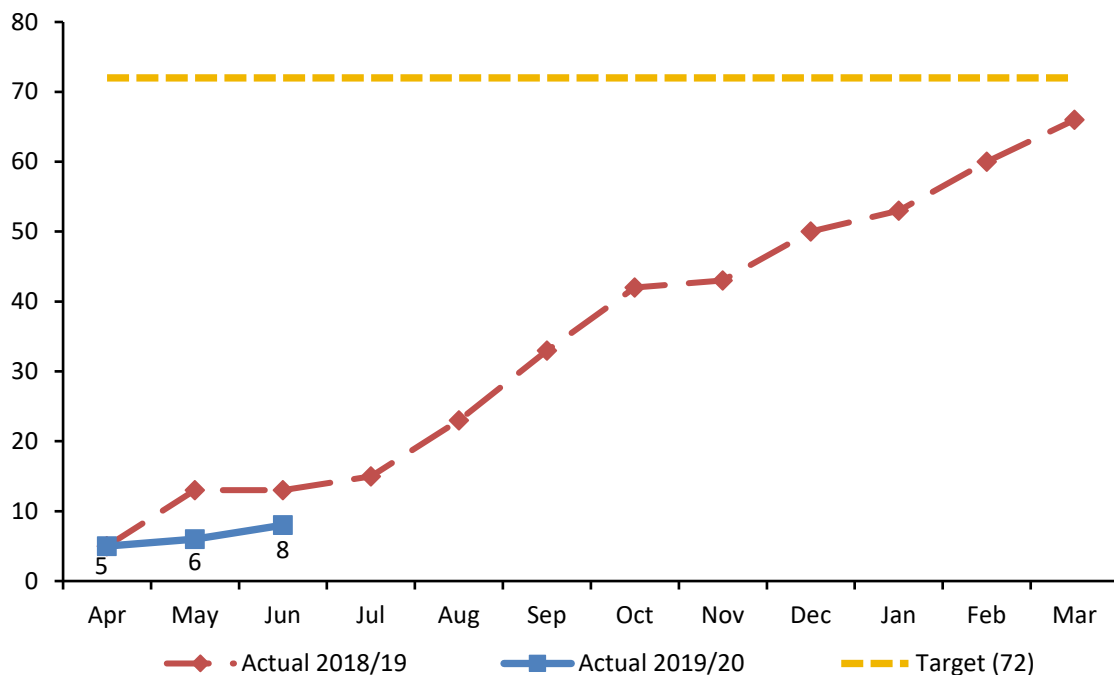
Percentage is currently above target for the first time in two years (28 out of 32).

Percentage of co-responder calls (medical) responded to within 8 minutes (Rolling 12 months)



Percentage is currently above target (62 out of 71). End of year forecast of 92.82% is above last year's result of 84.27% and well above the end of year target of 80% and the three year target of 90%

Number of people (including children) killed or seriously injured (KSI) in road traffic collisions (RTCs) (cumulative)



Reported on a three-month lag. Currently below last year's figures.

During March there were eight KSI recorded incidents resulting in eight serious injuries and one slight injury.

Benchmark: In the nationally published data for 2014-2016, the Isle of Wight had the highest figure of all its comparators at 55.0 per 100,000 compared to England's 39.7.