

# Appendix A4 Q1 – REGENERATION & BUSINESS DEVELOPMENT

## Key Activities

**Complete the full business case and masterplan for Newport Harbour (April 2020), Nicholson Road (March 2020) and Sandham (May 2020).**

***Newport Harbour** - Consultation runs until the end of August, it has been extensively pushed via various communication/media methods. Initial summary and feedback will be released.*

***Nicholson Rd** - Planning application to be submitted in Q2 within an indicative timescale for decision by end of the 2019 calendar year. Stage 3 report received from architects and public consultation will take place regarding the phasing of the development. Project Plans have been updated based on recommendations from a recent audit of the project.*

***Sandham Middle School** – Site brief is complete and tender pack is being made ready to go to market to identify a joint venture partner. This has required more work than originally intended and timescales for getting out to market have slipped.*

***Medina Avenue** – Planning permission has been granted for six 3-bed homes (five private rent sector and one affordable rented). Originally scheduled to be completed by Christmas 2019 there has been a delay on the site due to badgers and some additional funding requirements for the site.*

**Continue to work with partners on the One Public Estate (OPE) schemes, including the Blue Light Hub and Pyle Street and Sandown Hub projects – full business case for one of these projects by March 2020 and others by October 2020**

*Ongoing work.*

**Work with businesses and training providers to develop a plan for increasing the number of apprenticeship placements and reduce the number of young people not in education, employment or training (NEET)**

*The Island Youth Investment Programme (IYIP) is the council's commitment to provide 200 new employment opportunities by 2020, including Traineeships and Apprenticeships. The Council itself has employed close to 100 apprentices. Work continuing with IW College and other providers on producing entry level courses is ongoing.*

**Deliver the Island's Regeneration Strategy, developing a three-year programme of investment linked to the council's Medium-Term Financial Plan.**

*The Strategy "Inspiration Island" was approved by Cabinet in June 2019. Cabinet also recommended the strategy to other stakeholders in public, private and community sectors on the Isle of Wight and encourages collective endorsement and ownership of its aims and objectives.*

**Continue with our public engagement programme to underpin area based social regeneration activities covering the whole Island.**

*This is the continuation of The Wight We Want consultation. Area workshops are to continue. Focus will shift now that the strategy has been completed on to supporting local project groups in each of the six regeneration areas.*

**Work to ensure the transfer of key sites, currently in the ownership of government departments or Homes England, into council ownership in support of housing and employment priorities, including land in Newport and East Cowes.**

*IWC have made final offer on the East Cowes site and is awaiting response.*

*IWC discussions with Ministry of Justice continue.*

**Intervene in the supply of housing to accelerate the delivery of new homes and increase the availability of suitable temporary accommodation and affordable housing for Island residents.**

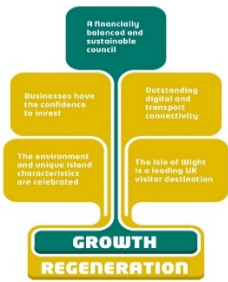
*There has been a review of all options for homeless provision. Sites were discussed within the Council's estate and other properties available to us. Cross departmental project team have identified the Barton Site as a solution for this winter.*

*Update on housing sites is provided under priority 1 in this appendix.*

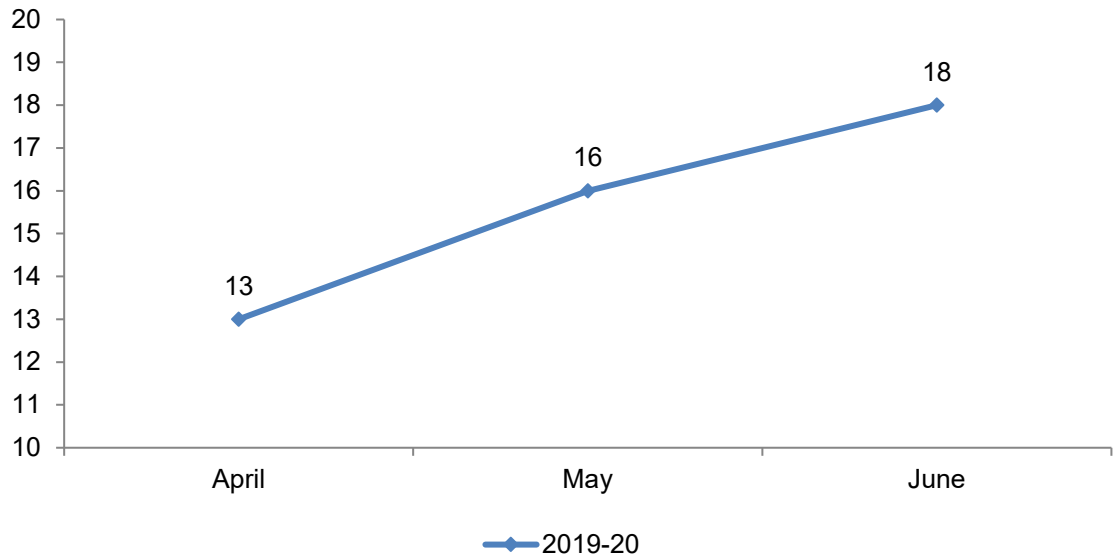
DRAFT

## Short term measures

Number of unique contacts with businesses (not in contact before)

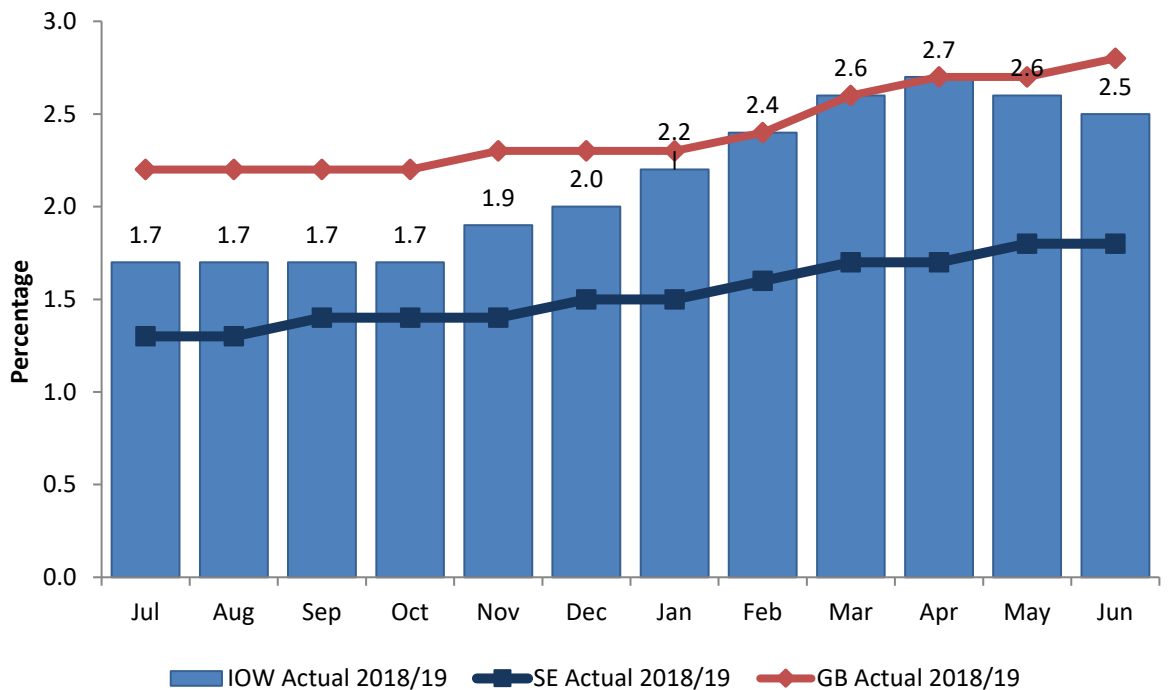
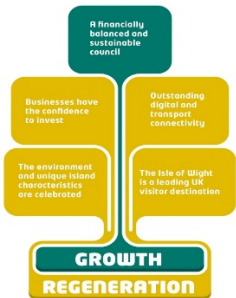


Number of unique contacts with businesses



Unique contacts with businesses over the last quarter have increased month by month including larger corporations and smaller local businesses. (New measure)

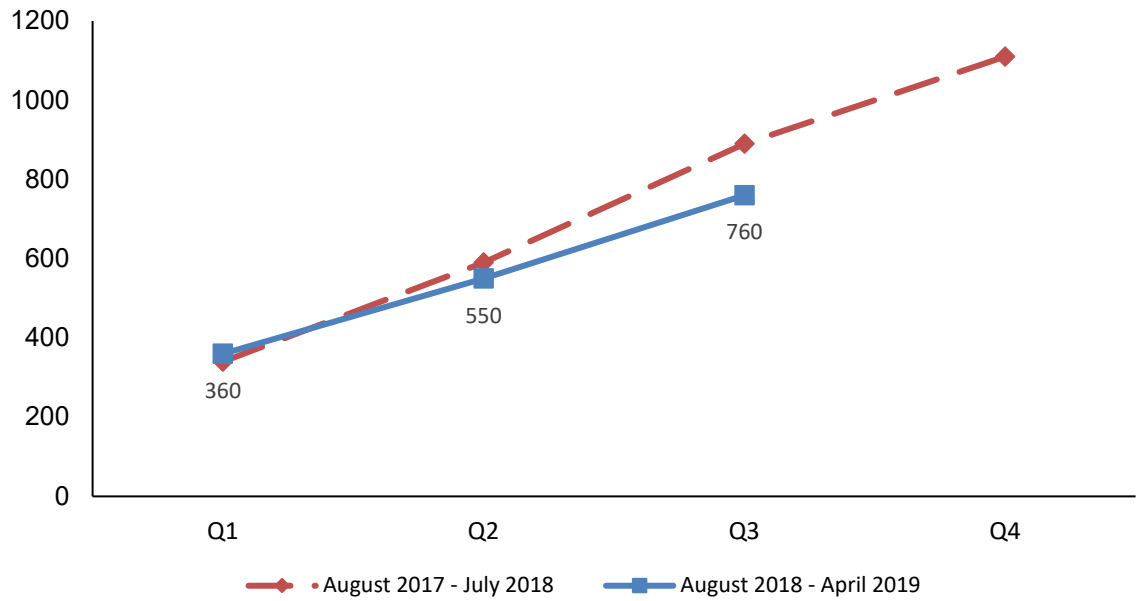
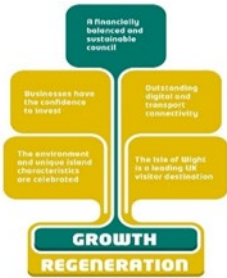
Percentage of out of work benefit claimants per month



The Isle of Wight's rate of out of work benefit claimants has decreased over the last quarter likely due to the increased availability of seasonal employment. The percentage of people claiming benefits on the Isle of Wight is higher than the South East percentage (1.8 per cent) but lower than the national figure (2.8%).

## Number of apprenticeship starts.

Source: Education and Skills Funding Agency (Cumulative)



Education years and quarters (August – July 2017/18 and August 2018 – April 2019 cumulative).

There were 1,110 total apprenticeship starts for the Isle of Wight in 2017/18. Current rate August 2018 – April 2019 is lower than the previous 12 months and is being addressed through continued work with providers and employers to encourage provision.

## Strategic Risks

None identified