

# Appendix A10 Q1 – PROCUREMENT, WASTE MANAGEMENT, SPECIAL PROJECTS & FORWARD PLANNING

## Key Activities

**Ensure the completion and implementation of the new waste to energy plant, to time and budget and that once open the plant delivers as per the requirements of the waste contract and the commercial aspects of the contract are delivered.**

*Work on the energy from waste plants is progressing and working toward the revised autumn completion date. The council is aware that the plant supplier has some financial risks, which Amey are working proactively to resolve. Construction risk sits with Amey and any delay will not be at the Council's cost.*

**Complete the review of all premises requiring commercial waste collections and develop an appropriate commercial offer to the owners of the premises.**

*The council in partnership with Amey offer a trade waste service that has been operating at a minimal level whilst the facilities at Forest Park have been under construction. The service currently provides waste and recycling collection and disposal for 44 schools and nurseries (collection charge only), special events and small businesses across the Island. As the mechanical treatment plant nears completion there is room to expand the offer to a wider range of businesses and co-collects the commercial waste on the household waste vehicles to utilise spare capacity and reduce operational cost..*

**Develop a corporate approach to the minimisation of single use plastics.**

*A corporate approach to minimising single use products including plastics within the council's functions will be developed.*

**Ensure that all procurement activity includes the need for good environmental performance from goods and services.**

*For the council's procurement processes where the whole life value of the contract is over £25k, the procurement and contract management team work with commissioners prior to commencing the tender process on a number of considerations, one of which is environmental.*

*Stage 1 of the procurement process requires all tenderers to declare whether they have ever been fined for a breach of environmental obligations. Where a supplier has breached their environmental obligations they can be excluded from the procurement process. Further selection criteria can be included where appropriate to assess a supplier's approach to environmental considerations. Stage 2 of the evaluation process is where contract award criteria is set and will look specifically at how a contract is delivered. Where it is specifically linked to the subject matter of the contract, commissioners will build in environmental considerations to the specification and key performance indicators and this will be assessed during the tender process through the evaluation of award criteria and then subsequently managed during the life of the contract with the successful supplier. With the development of the council's contract management system, the KPI data will be reported in the central system and any supplier found not to be meeting their obligations will be flagged and appropriate action can be taken.*

**Review energy management activity and procurement of energy for all council owned and operated assets to ensure it provides economic and environmental best value**

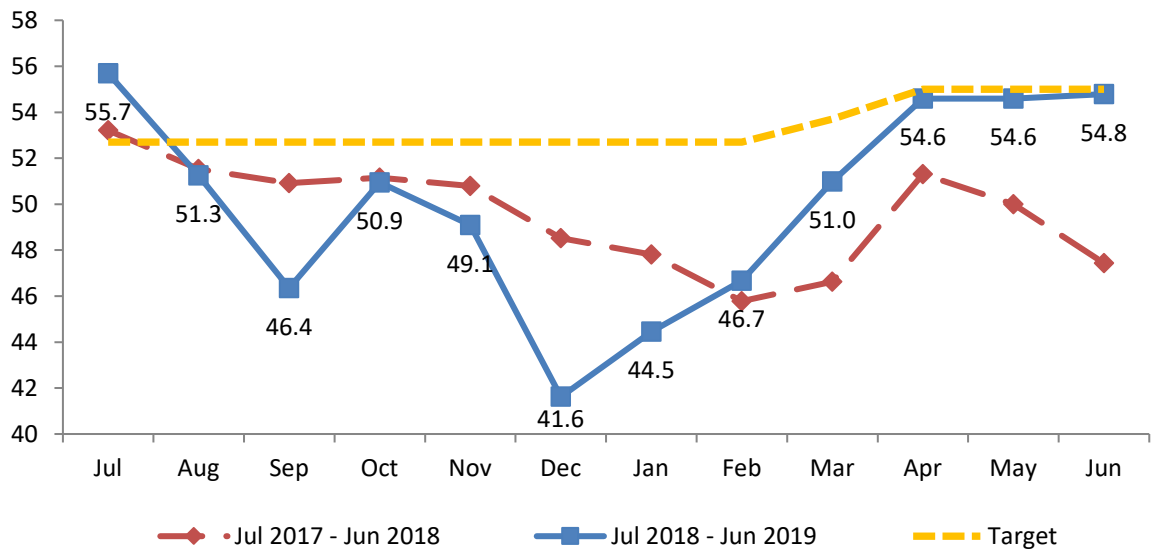
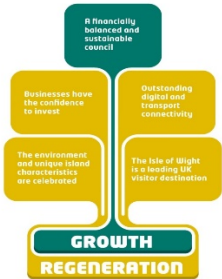
*Energy continues to be procured on a fixed term fixed price basis through Laser (Kent CC) with the most recent contracts set to run from 1 October 2019 to 30 September 2020. Water contracts procured through Crown Commercial services have just been extended with Business Stream to run through until 31 January 2021.*

*Consideration should be given to entering into a longer term 'semi-flexible' energy contract for gas and electricity with a term of at least five years, providing greater resilience against market fluctuations and reduced administration time (IWC) associated with changing suppliers.*

DRAFT

## Short term measures

Percentage of contract waste recycled or composted (Rolling 12 months)



Performance in this area is in line with target and well above the position last year. This shows the decreasing reliance on landfill in favour of increased levels of recycling and composting.

DRAFT