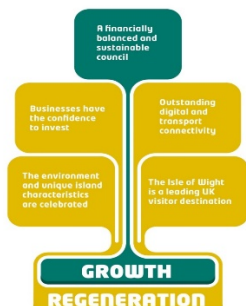


## Appendix A6 Q3 – PLANNING & HOUSING RENEWAL

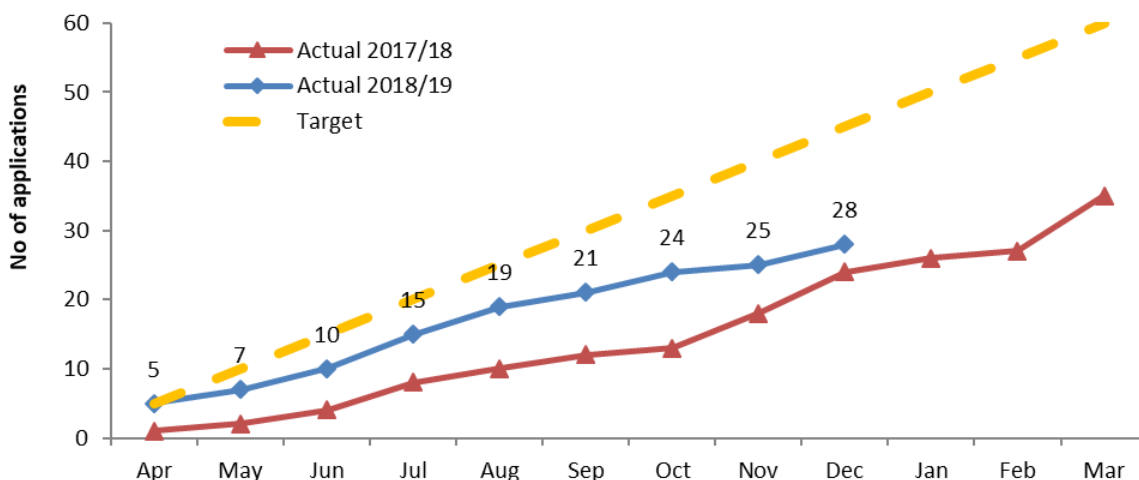
<b>Key Activities</b>
<p><b>Consider and implement the outcomes of the business case for the provision of extra care housing and seek the funding for its delivery</b></p> <p><i>Continuing to progress the work with Southern Housing and the Joint Commissioning Unit on the mobilisation plan for Ryde Village Extra care Scheme</i></p>
<p><b>Work with partners and key stakeholders to identify and deliver appropriate schemes to meet local housing needs through a housing delivery plan</b></p> <p><i>A report on the council's approach to housing delivery was presented to Cabinet in November. Work is on-going to research the set-up of a development company and into the tools/powers the council has to work with developers and regeneration providers in a partnership approach. Working on a revised empty property strategy and a revised housing strategy to be relaunched in April 2019</i></p>

## Short term measures

### Number of major planning applications received (cumulative)



### Number of major planning applications received (cumulative)

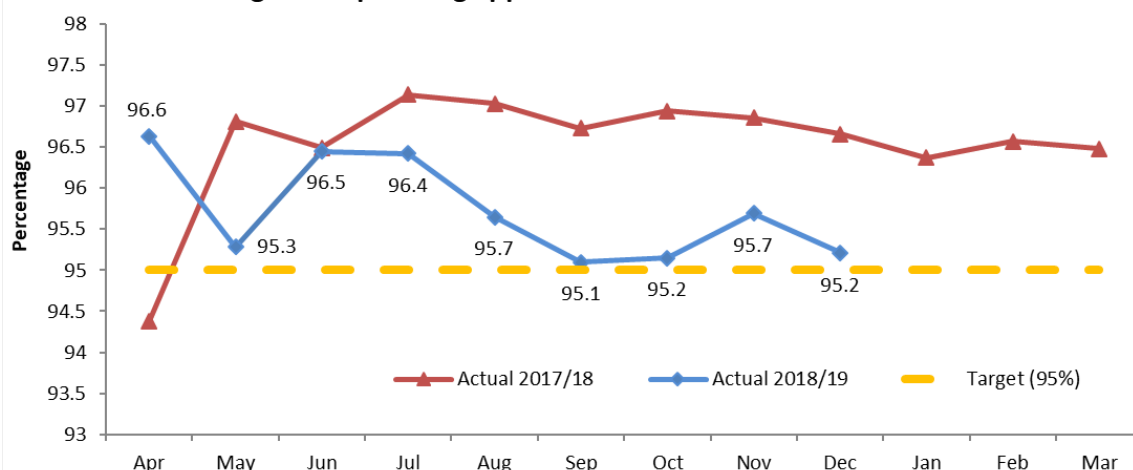


December 2018 - No Comment

### Percentage of all planning applications determined within 26 weeks



### Percentage of all planning applications determined within 26 weeks



Benchmark - The authority determined 90% of major applications within 13 weeks compared to a target of 60% and national average of 86%. The authority determined 97% of minor applications within eight weeks, compared to a target of 65% and national average of 85%. The authority determined 98% of other developments within the required eight weeks, compared to a target of 80% and national average of 91%. (Data from LG Inform relating to 2018/19 Quarter 2 (Jul-Sep 2018))

Note. Long and short term performance for Housing Needs have been transferred to Appendix A1 Adult Social Care, Public Health and Housing Needs.