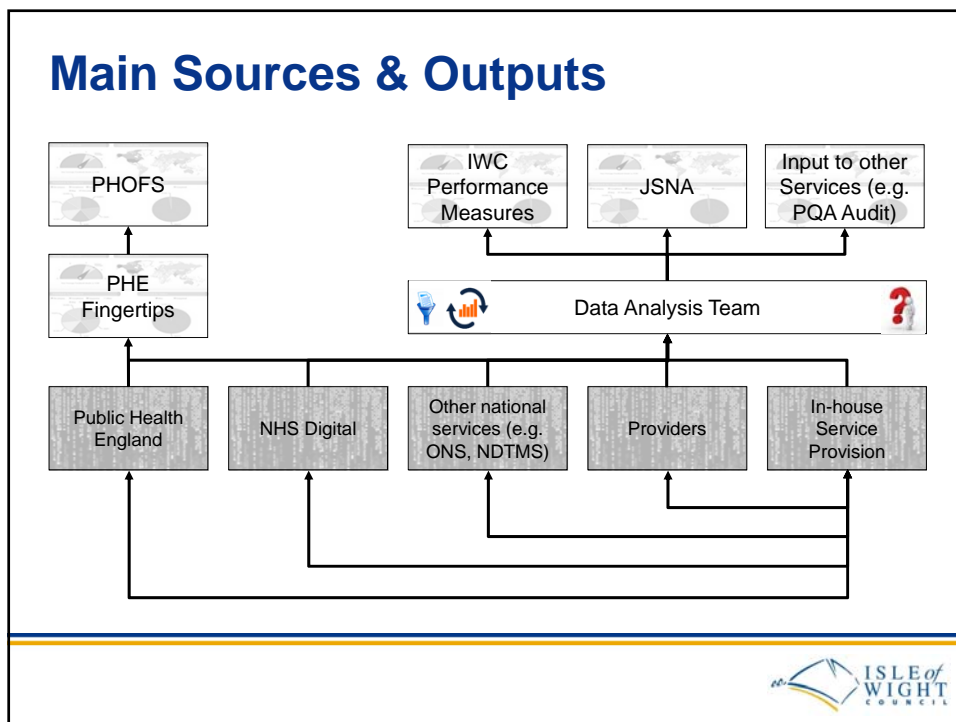


Performance Reporting

Public Health



Comparator Groups

- Isle of Wight metrics are not normally compared against our near neighbours
- Comparisons are at a national (England) level, regional (South-East) or against pre-defined comparator group
- Comparator Groups are similar authorities or CCGs which match the Island across a range of criteria, and are different for each focus area.



Comparator Groups

CIPFA comparator authorities

- 1 North Somerset
- 2 Torbay
- 3 East Riding of Yorkshire
- 4 Northumberland
- 5 Cornwall
- 6 Sefton
- 7 Poole
- 8 Herefordshire
- 9 Shropshire
- 10 Wirral
- 11 Bournemouth
- 12 Bath & North East Somerset
- 13 Southend-on-Sea
- 14 Cheshire West & Chester
- 15 Cheshire East

NHS England comparator CCGs

- 1 NHS West Norfolk CCG
- 2 NHS Hastings And Rother CCG
- 3 NHS Lincolnshire East CCG
- 4 NHS Great Yarmouth And Waveney CCG
- 5 NHS Eastbourne, Hailsham And Seaford CCG
- 6 NHS Hambleton, Richmondshire And Whitby CCG
- 7 NHS Herefordshire CCG
- 8 NHS South Kent Coast CCG
- 9 NHS East Riding Of Yorkshire CCG
- 10 NHS Northumberland CCG

Children's Services comparator authorities

- 1 Torbay
- 2 Norfolk
- 3 East Sussex
- 4 Southend-on-Sea
- 5 Plymouth
- 6 Cornwall
- 7 Lancashire
- 8 Cumbria
- 9 Suffolk
- 10 Telford and Wrekin

Community Safety Partnership 2016 Iquanta comparators

- 1 Hampshire - Isle of Wight
- 2 Humberside - North Lincolnshire
- 3 Kent - Shepway
- 4 North Wales - Wrexham
- 5 North Wales - Flintshire
- 6 North Wales - Conwy
- 7 North Wales - Denbighshire
- 8 Suffolk - Waveney
- 9 Essex - Tendring
- 10 Kent - Dover
- 11 Nottinghamshire - Newark and Sherwood
- 12 Nottinghamshire - Bassetlaw
- 13 Lincolnshire - Boston
- 14 Staffordshire - Newcastle-under-Lyme
- 15 Northamptonshire - Kettering

CIPFA LAs

http://www.cipfastats.net/default_view.asp?content_ref=18003

NHSE CCGs

<https://www.england.nhs.uk/resources/resources-for-ccgs/comm-for-value/>

Children's Services

https://www.gov.uk/government/uploads/system/uploads/attachment_data/file/360560/childrens_services_statistical_neighbour_benchmarking_tool.xls

Community Safety Partnership comparators (taken from Iquanta)

<https://iquanta.projectfusion.com/share/page/site/iquanta/document-details?nodeRef=workspace://SpacesStore/5ed8de44-3da7-4194-8f27-ef97da0c746>

NB this link will only work for users registered on the Iquanta site.



Public Health Outcomes Framework (PHOF)

- The framework focuses on the respective role of local government, the NHS and Public Health England, and their delivery of improved health and wellbeing outcomes for the people and communities they serve.
- Its vision is to improve and protect the nation's health and wellbeing, and to improve the health of the poorest fastest.
- The Public Health Outcomes Framework is not a performance management tool for local authorities, but the data enables local authorities to benchmark and compare their own outcomes with other local authorities.
- Measures are grouped as follows:

Category	Scope
Overarching indicators	Indicators focussed on the differences in life expectancy and healthy life expectancy between communities.
Improving the wider determinants of health	Indicators for tracking progress in wider factors that affect health and wellbeing.
Health improvement	Indicators for tracking progress in helping people to live healthy lifestyles and make healthy choices.
Healthcare public health and preventing premature mortality	Indicators for tracking progress in reducing numbers of people living with preventable ill health and people dying prematurely.

Visit: <https://fingertips.phe.org.uk/profile/public-health-outcomes-framework> for further information and to view the data.



PHOF Profiles

- Updated annually (July) for national, region and LA levels
- Summary and detailed profiles for the Isle of Wight are available for 2017 (using 2016/17 data)
- Summary document:
<http://fingertipsreports.phe.org.uk/health-profiles/2017/e06000046.pdf>
- Detailed document:
<http://fingertipsreports.phe.org.uk/public-health-outcomes-framework/e06000046.pdf>



Other Outputs

Category	Scope
Performance Reporting	Monthly/ Quarterly/ Yearly metrics used to highlight service performance across Public Health to CMT / Chief Executive.
JSNA	The Joint Strategic Needs Assessment provides in-depth analysis of public health and other data for the Isle of Wight, and is used to inform planning and decisions across the Authority.
Input to Other Services	Public Health provide background or performance data to a number of other services for inclusion in those services reporting mechanisms

To view the JSNA factsheets, please visit:

<https://www.iwight.com/council/OtherServices/Isle-of-Wight-Facts-and-Figures/Joint-Strategic-Needs-Assessment-JSNA>



Commissioning

- Public Health act as a commissioner for a number of services provided by third parties
- As contracts are refreshed, appropriate performance measures, linked to PHOF outcomes, are written in
- Provisions are included in the contracts that link service performance to the Provider's financial performance, allowing the Authority the opportunity to reduce their spend as a result of poor performance
- Where Public Health acts as the provider (Local Area Coordination / Wellbeing Service), management reporting is generated to allow control and oversight of the services provided.

