

# PAPER E

## 1. HEALTH AND WELLBEING BOARD

1.1. Isle of Wight Local Care System

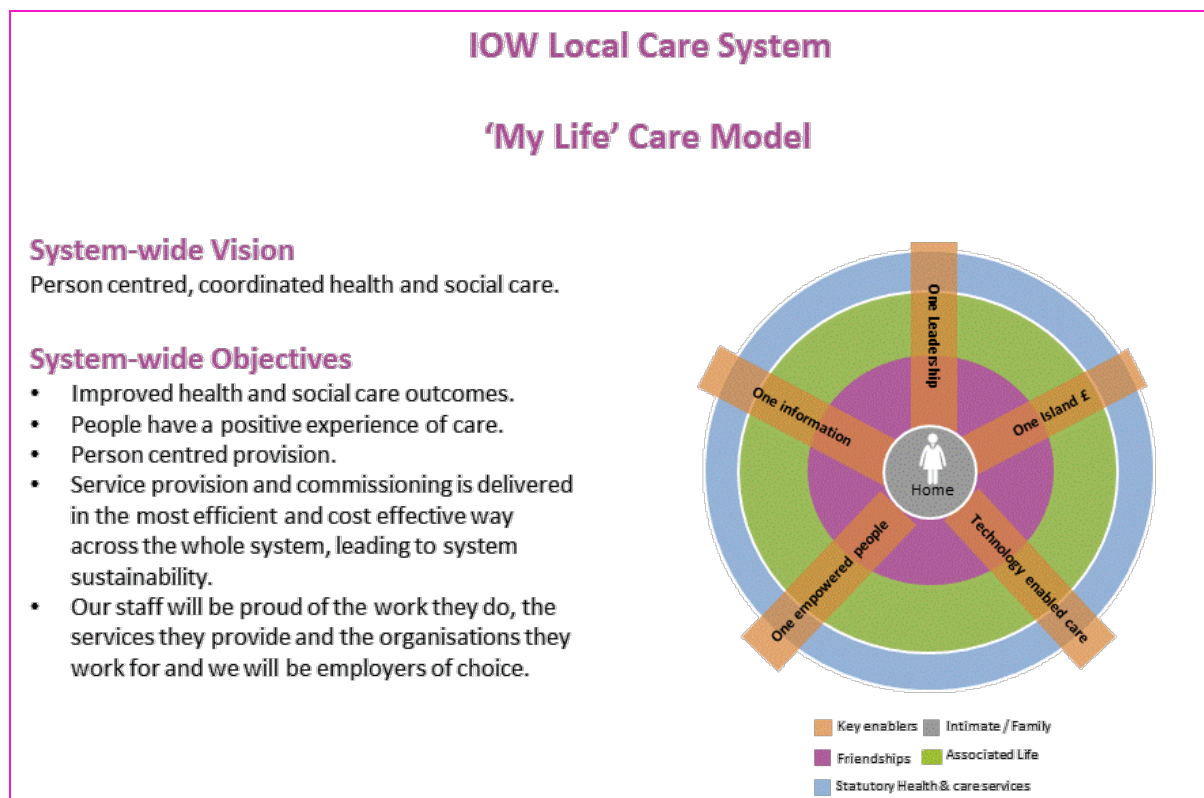
1.2. This paper is for general publication.

1.3. 29 JUNE 2017

1.4. Nicola Longson – [Nicola.Longson@IOW.nhs.uk](mailto:Nicola.Longson@IOW.nhs.uk)  
Paul Sly - [paul@slyconsulting.co.uk](mailto:paul@slyconsulting.co.uk)

## 2. Summary

2.1 The Local Care System is the mechanism by which the Isle of Wight will bring together the Council, Clinical Commissioning Group and the NHS Trust along with wider partners and stakeholders to continue to deliver the Local Care System Vision outlined below.



2.2 The Local Care System has agreed to streamline, speed up and prioritise the way we work and what we do - with a focus on the few things that will make the biggest difference to the population we serve.

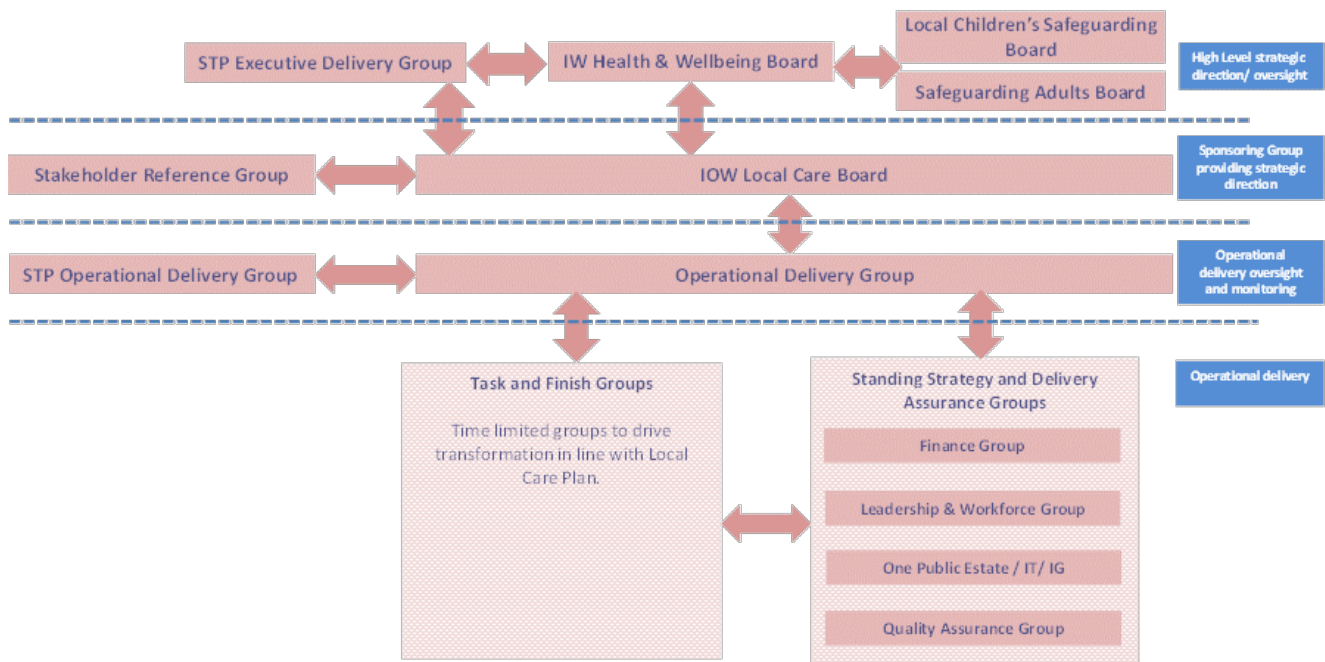
2.3 A Local Care Board has been established to unite efforts to improve the overall quality of health and social care on the Isle of Wight, and put patients, communities and taxpayers interests above those of our individual organisations.

- 2.4 A Local Care plan is being developed and will be agreed by Local Care Board, and brought to the Health and Wellbeing Board for approval. This plan will identify and prioritise the changes required to improve care across the island.
- 2.5 Paul Sly is supporting the Local Care System in the post of System Convenor for a time limited period. The key deliverables of this post include: -
- To identify and prioritise the changes required to improve care across the island, in line with the Island's vision.
  - To support the development of a credible strategic plan for the Isle of Wight Local Care System.
  - To streamline the existing governance arrangements and further develop a joint programme office to drive system wide quality improvements and financial efficiencies.
  - To act as the Executive interface between the Hampshire and IOW STP and the IOW Local Care System.
  - To support the Local Care System discussions with NHS England and NHS Improvement.

Paul is working with the System wide Transformation team on the above.

- 2.6 A review of the Local Care System governance and accountability has been carried out and an agreed future approach agreed by the Local Care Board. This new approach will remove duplication, ensure clear accountability and responsibility, and monitor delivery of the Local Care Plan. The below diagram shows the new system wide structure.
- 2.7 The work underway to implement the 'My Life' care model continues across the Island, and the system wide transformation team continue to work with the Department of Health New Care Model team through the National Vanguard Programme to drive this work forwards. The work to date and future planned work is shaping the development of the Local Care Plan.
- 2.8 The Island is now in Year 3 of the Vanguard Programme and the Programme Director is working closely with the Local Member to share details of the impact to date on population we serve and the Isle of Wight Local Care System

## Isle of Wight Local Care System governance structure



### 3. Decisions, recommendations and any options

3.1 The Board is asked to note the report and update provided

#### 3.2 Relevant information

All relevant information included in the paper.

### 4. Important considerations and implications

4.1 Legal

No implications

4.2 Finance

No implications to this change of approach. Any changes which have financial implications will be discussed by the Local Care Board.

4.3 Equalities and Diversity

The council as a public body is required to meet its statutory obligations under the Equality Act 2010 to have due regard to eliminate unlawful discrimination, promote equal opportunities between people from different groups and to foster good relations between people who share a protected characteristic and people who do not share it. The protected characteristics are: age, disability, gender reassignment, marriage and civil partnership,

pregnancy and maternity, race, religion or belief, sex and sexual orientation.

No implications

4.4 Future Proofing / Exit strategy

No implications

4.5 Health, social care, children's services and public health and other partners who may be effected by the report

Affects all parts of the statutory system however no direct implications related to this update. Any changes which have implications on the partners identified above will be discussed by the Local Care Board.

4.6 Key PIs that will be monitored and why

Not applicable for this update

**5 Supporting documents and information**

None supplied

Contact Point: Nicola Longson, Programme Director  
email: [Nicola.Longson@IOW.nhs.uk](mailto:Nicola.Longson@IOW.nhs.uk)

Paul Sly, System Convenor  
email: [paul@slyconsulting.co.uk](mailto:paul@slyconsulting.co.uk)