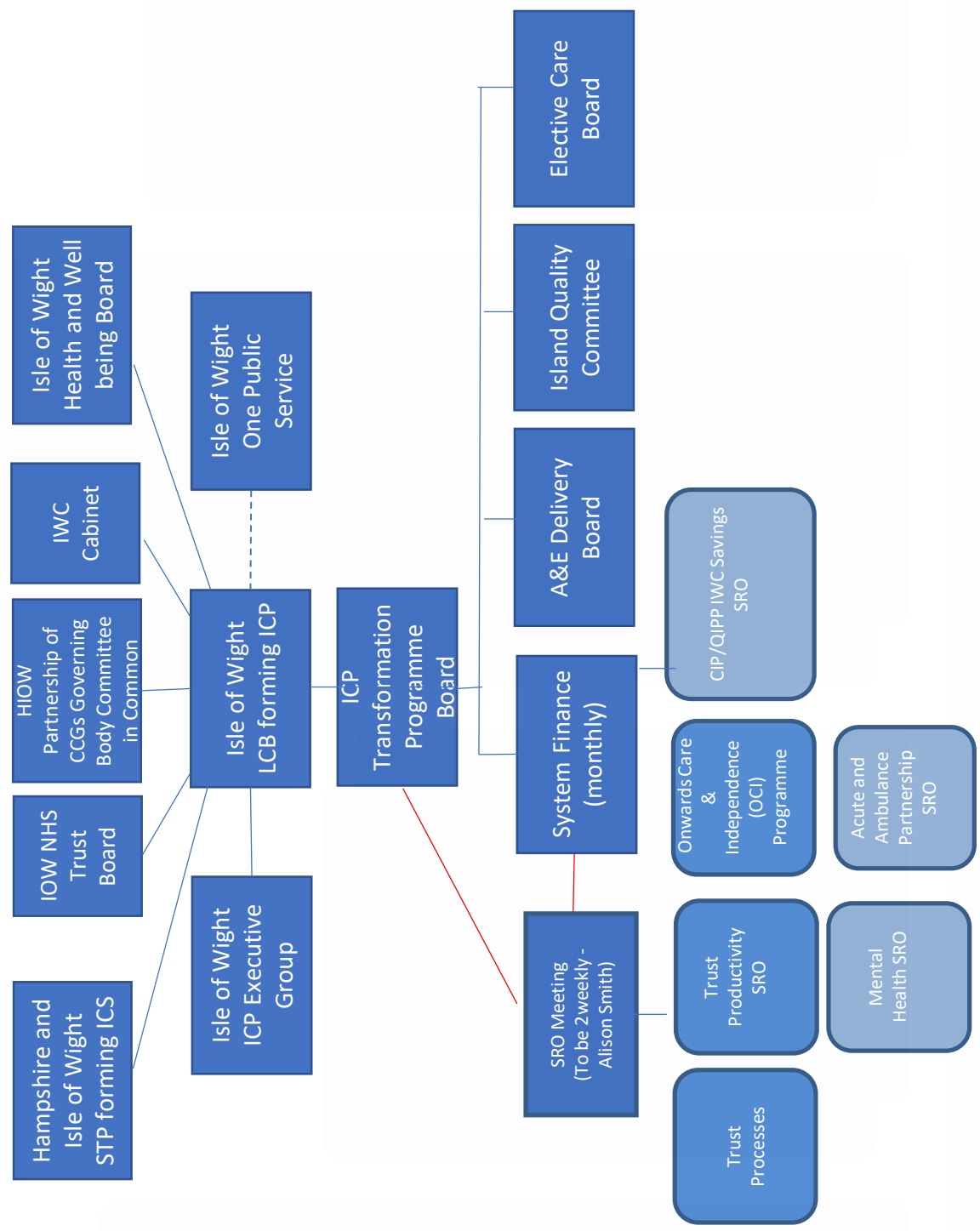


Island Integrated Care Partnership Draft Governance Structure



ICP Board Membership

Chief Executive IW Council [Lead CX for the ICP – review in March 2021]
Chief Executive IW NHS Trust
Chief Executive HIOW CCG (can delegate to MD)
Managing Director IW CCG (SRO H&C Sustainability Plan)

ICP Executive Group

[meet formally every 2 weeks 1st/3rd week]

[Action Log/Agenda only]

Chair IW NHS Trust
IW NHS Trust - Non Executive Director
IW NHS Trust - Medical Director
IW Council Leader
IW Council - Cabinet Member for Adult Social Care and Public Health
HIOW CCG Non Executive Director
IW CCG - Clinical Chair
Primary Care Network Clinical Directors (x2)
Mountbatten Hospice Chief Executive
Age UK Chief Executive
IW Council - Director of Adult Social Care
IW Council - Director of Children's Services
IW Council - Director of Public Health
System Finance Lead
System Health & Care Quality Lead

ICP Board including Exec

Group members

[meet monthly 4th week]

[formal minutes, actions etc, for scrutiny purposes]

[Membership to be reviewed within 6 months of transition period]

ICP Transformation Delivery Group

Membership

Chief Executive - IW NHS Trust [Lead CX for the Transformation – review in March 2021]

* Medical Director – IW NHS Trust

* Chair of the IW NHS Trust

* Chair - IW CCG

Managing Director - IW CCG

Chief Executive - IW Council

* * Director of Adult Social Service – IW Council

* Cabinet Member for Adult Social Services and Public Health – IW Council

System Finance Lead

System Health and Care Quality Lead

Senior Responsible Officer (health and care sustainability plan)

Senior Responsible Owners (for each of the health and care programme strands)

Chief Executive – strategic Partner for Acute Services

Chief Executive – Strategic Partner for Mental Health Services

*** Inclusion of these roles to be reviewed within 3 months (April '20)**

**** already under SRO's inclusion**

ICP Transformation Group
[meet monthly 1st week Thur and to
stagger between 2wly SRO meetings]
[formal minutes and action log supported
by Progress delivery report]
Review after 3 months