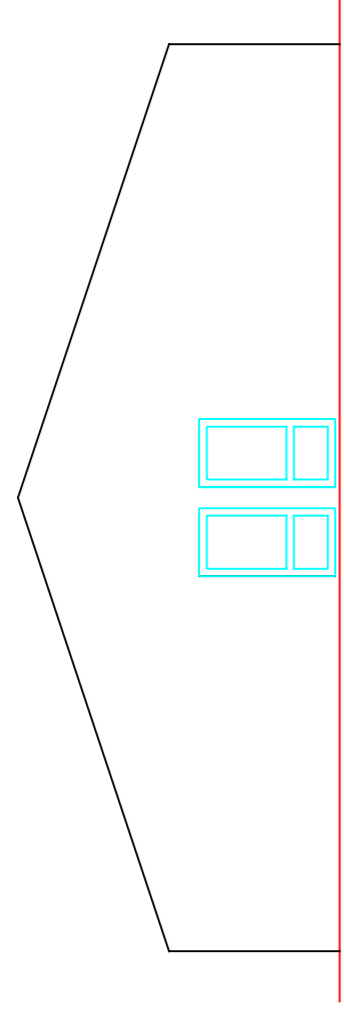
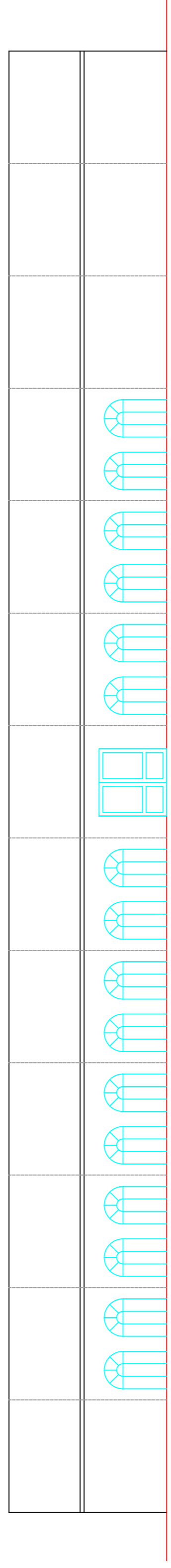


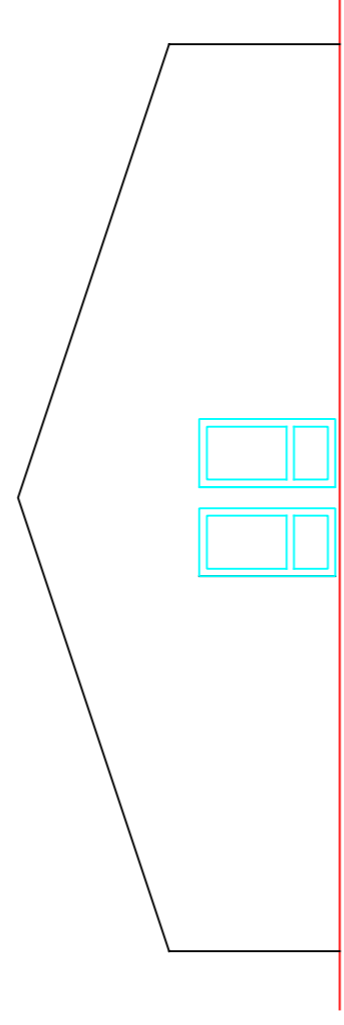
Rear/side elevation



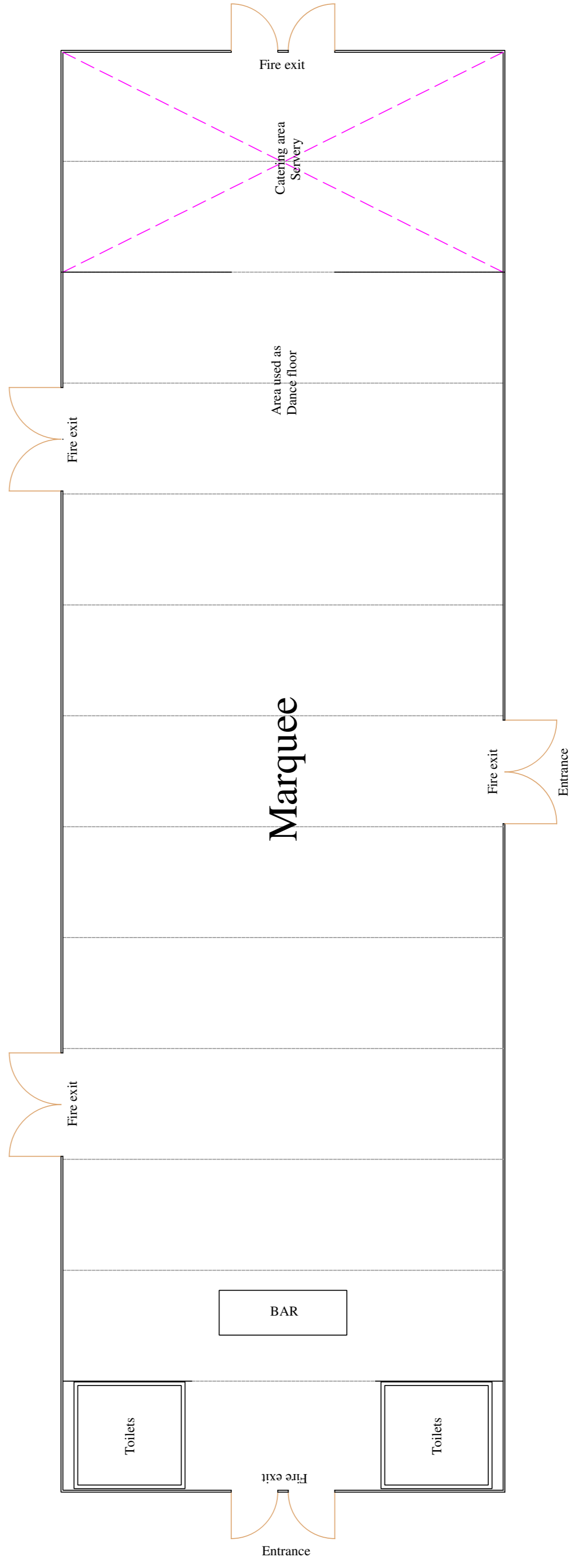
End elevation



Front/side elevation

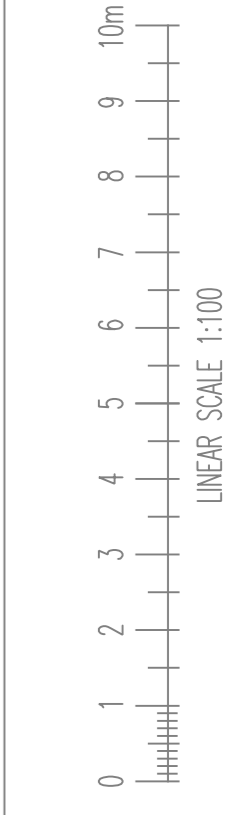


End elevation



Marquee Plan.

ALL LEVELS AND DIMENSIONS MUST BE CHECKED ON SITE. THESE DRAWINGS ARE TO BE READ IN CONJUNCTION WITH ENGINEERS, AND ALL OTHER SPECIALIST CONSULTANT DETAILS. THIS DRAWING IS COPYRIGHT OF MACAIRE ASSOCIATES. THE CLIENTS RESPONSIBILITY TO AGREE ANY ALTERATIONS TO APPROVED PLANS WITH THE PLANNING AND BUILDING REGULATION AUTHORITIES. IT IS THE CLIENTS RESPONSIBILITY TO READ AND COMPLY WITH CONDITIONS IMPOSED ON ANY PLANNING AND BUILDING REGULATION APPROVALS ASSOCIATED WITH THESE PLANS, INCLUDING AGREEING MATERIALS AND FINISHES WITH PLANNERS PRIOR TO COMMENCEMENT.



Date: April 2017
 Drawn by: PM
 Checked by:

Revision

Scale: A1 @ 1:100
 Drawing No: 42-2004 MQ
 Project: Marquee Plan and elevations.

Location: NCCG Blackwater.

'The Dairy' at Hebbardens, Yarmouth Road, Staffleet, Newport, Isle Of Wight, PO30 4NB. Tel:01983 558132